

GUCB  **R**
GENERATOR

www.gucbirgenerator.com





COMPANY PROFILE

In 1980s, Gucbir Generator started with the principle of providing world-class services to its customers by using the philosophy of best and highest quality production sales and services, which has managed to become one of the largest generator company all around the globe and Turkey in last 40 years.

With the introduction of fabrication production in 2006, it has met the needs of thousands of institutions and organizations. Gucbir Generator, which continues to provide 24/7 support operations with the team of more than 200 highly qualified engineers and manages its own infrastructure, investments and R&D policies by producing the most advanced machine tracks among all generator companies in Turkey.

Gucbir having a professional team and latest equipments in its factory 45.000 m² of production and storage space in Kdz.Eregli and in the field of 5.000 m² for service and storage in Sultanbeyli/Istanbul, increasing its capacity in direct proportion to the developments in the sector and following a developing line it is one of the leading companies in the sector with its direct and indirect exports to more than 90 countries.

GUCBİR

45000 m² ASSEMBLY AREA

3600 GENERATORS
PRODUCED IN 2018



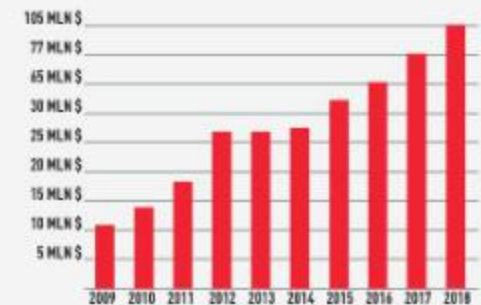
45000 m² SQM
ASSEMBLY AREA



IN 2018
3600 GENERATOR PRODUCTION



200+ EMPLOYEES



105 MLN - 2018

ENTERPRISE

In 1980, we established our first 500 m² facility based manufacture centre in İstanbul/Ümraniye.

1980

500 GENERATOR PER YEAR

In 2006, we increased our annual generator production capacity to 500 units.

2006

45000 m² PRODUCTION AREA

We have reached the capacity of exporting to more than 90 countries and domestic market in our 45.000 m² facility based factory.

2016

"GET BETTER EVERYDAY"

TASDELEN FACTORY

In 2002, we opened our 5.000 m² facility based Tasdelen/Istanbul factory.

2002

EREGLI FACTORY

In 2017, we started to establish our 45.000 m² facility based factory in Zonguldak/Ereğli.

2017

3600 GENERATOR PER YEAR

We started to meet the needs of our customers with 3600 generator production in per year by increasing our employment and machinery.

2018

GUCB⚡**R**

CERTIFICATES



TS ISO/IEC 25051:2015



ISO 10002:2014



ISO 9001:2015



ISO 14001:2015



OHSAS 18001:2007



CE GUCBIR GENERATOR



CE MARANELLO



TRADE MARK



TSE PANEL



TSE GUCBIR GENERATOR



TSE MARANELLO ALTERNATOR



SERVICE COMPETENCE CERTIFICATE



MADE IN TURKEY 7,5kVA - 75kVA



MADE IN TURKEY 75kVA - 375kVA



NEUTRAL SALT SPRAY REPORT



INDUSTRIAL REGISTRY CERTIFICATE



PERKINS OEM CERTIFICATE



BAUDOIN OEM CERTIFICATE





EUROPE
%20

TURKEY
%20

ASIA
%20

AFRICA
%20

MIDDLE EAST
%20

WORLD WIDE CUSTOMERS
EXPORTS MORE THAN
90 COUNTRIES
ACROSS THE GLOBE

DIESEL GENERATOR SETS



10 kVA 2500 kVA

Perkins

R
RICARDO

FPT IVECO

MOTELORS
Baudouin

XENIC
DRESS

VOLVO
PENTA

MITSUBISHI

TÜMOSAN

Kubota

STAMFORD

LERROY
SOMER

M
maranello
alternator

GJP SERIES

10 kVA - 2500 kVA

MODEL	400V / 230V		ENGINE	ALTERNATOR	DIMENSIONS (mm)		WEIGHT (mm)	
	STAND BY (kVA)	PRIME (kVA)			OPEN SET	CANOPY	OPEN SET	CANOPY
GJP10	10	9	403A-11G1	M12	1500x750x1100	1900x920x1180	500	650
GJP15	15	13	403A-15G1	M15	1500x750x1100	1900x920x1180	550	665
GJP22	22	20	404A-22G1	M25	1500x750x1100	1900x920x1180	650	770
GJP33	33	30	1103A-33G	M33	1800x950x1500	2225x950x1640	710	1060
GJP50	50	45	1103A-33TG1	M50	1800x950x1450	2225x950x1640	850	1190
GJP66	66	60	1103A-33TG2	M66	1800x950x1450	2440x950x1620	890	1250
GJP72	72	65	1104A-44TG1	M75	1800x950x1450	2440x1000x1840	950	1280
GJP88	88	80	1104A-44TG2	M88	2000x950x1500	2750x1100x1840	1000	1360
GJP110	110	100	1104C-44TAG2	M110	2000x950x1500	2750x1100x1840	1360	1570
GJP150	150	135	1106A-70TG1	M150	2200x1100x1600	2980x1100x2000	1500	1900
GJP165	165	150	1106A-70TAG2	M165	2200x1100x1600	3200x1100x2100	1650	1970
GJP200	200	180	1106A-70TAG3	M200	2500x1100x1600	3500x1100x2200	1900	2160
GJP220	220	200	1106A-70TAG4	M220	3500x1100x2200	3500x1100x2200	2150	2750
GJP250	250	230	1506A-E88TAG2	M250	2500x1100x1600	3500x1250x2240	2200	3100
GJP275	275	250	1506A-E88TAG3	M275	2500x1100x1600	3500x1250x2240	2100	3100
GJP300	300	275	1506A-E88TAG4	M330	3000x1250x1800	3950x1250x2400	2900	4000
GJP330	330	300	1506A-E88TAG5	M330	3000x1250x1800	3950x1250x2400	3000	4400
GJP400	400	350	2206A-E13TAG2	M400	3000x1250x1800	4480x1600x2700	3400	4400
GJP450	450	400	2206A-E13TAG3	M450	3000x1250x1800	4480x1600x2700	3530	4430
GJP500	500	450	2506A-E15TAG1	M500	3000x1250x1800	4480x1600x2700	3890	4790
GJP550	550	500	2506A-E15TAG2	M550	3600x2100x2250	4480x1600x2700	4070	5090
GJP630	630	570	2806A-E18TAG1A	M660	3600x2100x2250	5000x2100x2550	4190	5090
GJP660	660	600	2806A-E18TAG1A	M660	3600x2100x2250	5000x2100x2550	4190	5090
GJP700	700	650	2806A-E18TAG2	M700	3800x2100x2350	5000x2100x2550	5100	7450
GJP825	825	750	4006-23TAG2A	M850	4600x2200x2350	5800x2100x2550	6700	8560
GJP900	900	800	4006-23TAG3A	M950	4600x2200x2350	5800x2100x2550	7300	9000
GJP1000	1000	900	4008-30TAG1	M1000	4600x2200x2350	6300x2200x2800	9300	11040
GJP1100	1100	1000	4008-TAG2A	M1100	4600x2200x2350	6300x2200x2800	9300	11040
GJP1250	1250	1125	4008-30TAG3	M1250	4650x2200x2350	8000x2250x2600	9610	11360
GJP1385	1385	1250	4012-46TWG2A	M1350	4650x2200x2700	8000x2250x2700	9720	15220
GJP1500	1500	1350	4012-46TWG3A	M1500	5500x2250x2700	8000x2250x2700	9800	15500
GJP1650	1650	1500	4012-46TAG2A	M1670	5500x2250x2700	8000x2250x2700	9922	16120
GJP1875	1875	1700	4012-46TAG3A	M2000	6500x2350x2700	12000x2350x2700	10700	19300
GJP2000	2000	1850	4016-TAG1A	M2000	6500x2350x2700	12000x2350x2700	12150	20400
GJP2250	2250	2000	4016-61TRG2	M2250	6500x2350x2700	12000x2350x2700	12350	20600
GJP2500	2500	2250	4016-61TRG3	M2500	6500x2350x2700	12000x2350x2700	16300	20900



GJR SERIES

20 kVA - 400 kVA

MODEL	400V / 230V		ENGINE	ALTERNATOR	DIMENSIONS (mm)		WEIGHT (mm)	
	STAND BY (kVA)	PRIME (kVA)			OPEN SET	CANOPY	OPEN SET	CANOPY
GJR20	20	18	R485	M20	1400x650x1300	1900x920x1180	700	800
GJR25	25	22,5	R490	M25	1500x750x1100	1900x920x1180	720	850
GJR40	40	36	R4100D	M40	1800x950x1400	2250x950x1640	740	960
GJR50	50	45	R4100ZD	M50	1800x950x1400	22250x950x1640	820	1050
GJR55	55	50	R4105D	M55	1800x950x1400	2440x1000x1840	910	1230
GJR75	75	68	R4105ZD	M75	1800x950x1500	2440x1000x1840	950	1290
GJR90	90	81	R4105IZLD	M90	1900x950x1500	2750x1100x1840	1120	1390
GJR110	110	100	R6105AZLD	M110	2200x1100x1700	2980x1100x2000	1400	1715
GJR125	125	113	R6105AZLD	M125	2200x1100x1700	2980x1100x2000	1400	1750
GJR150	150	135	R6105AZLD	M150	2200x1100x1700	2980x1100x2000	1450	1780
GJR175	175	160	R6105IZLD	M175	2200x1100x1700	3200x1100x2100	1500	1825
GJR220	220	200	R6113AZLD	M220	2500x1100x1700	3500x1100x2200	1700	2200
GJR306	306	275	R6126ZLD4	M330	3000x1250x1800	3950x1250x2400	2500	2950
GJR330	330	300	R6126ZLD5	M330	3000x1250x1800	3950x1250x2400	2600	3050
GJR400	400	350	R6D12D320A	M400	3000x1250x1800	3950x1250x2400	3050	4500



GJI SERIES

20 kVA - 400 kVA

MODEL	400V / 230V		ENGINE	ALTERNATOR	DIMENSIONS (mm)		WEIGHT (mm)	
	STAND BY (kVA)	PRIME (kVA)			OPEN SET	CANOPY	OPEN SET	CANOPY
GJI33	33	30	S8000 AM1	M33	1800x900x1420	2225x950x1640	750	1100
GJI55	55	50	N45 AM2	M55	1800x900x1500	2225x940x1640	860	1190
GJI66	66	60	N45 SM1A	M66	1800x950x1500	2440x1000x1840	900	1250
GJI82	82	74	N45 SM2A	M88	2100x1100x1650	2750x1100x1840	950	1290
GJI94	94	85	N45 SM3	M96	2100x1100x1650	2750x1100x1840	1450	2130
GJI110	110	100	N45 TM2A	M110	2100x1100x1650	2980x1100x2000	1550	2250
GJI132	132	120	N45 TM3	M135	2100x1100x1650	2980x1100x2000	1590	2290
GJI145	145	130	N67 SM1	M150	2100x1100x1650	2980x1100x2000	1600	2300
GJI185	185	165	N67 TM4	M194	2100x1100x1650	3200x1100x2100	2100	2745
GJI220	220	200	N67 TM7	M220	2100x1100x1650	3200x1100x2100	2140	2800
GJI275	275	250	C87 TE3	M275	2850x1200x1800	3500x1250x2240	2140	2800
GJI330	330	300	C87 TE4	M330	3100x1500x1900	3950x1250x2240	3000	4400
GJI385	385	347	C13 TE2A	M400	3100x1500x1900	4480x1600x2700	3240	4640
GJI440	440	400	C13 TE3A	M450	3100x1500x1900	4480x1600x2700	3530	4830
GJI550	550	500	CR13 TE7W	M550	3500x1800x2200	4480x1600x2700	4070	5090
GJI660	660	600	C16 TE1W	M660	3500x1800x2200	5000x2100x3040	4190	5150

GJB SERIES

22 kVA - 1900 kVA

MODEL	400V / 230V		ENGINE	ALTERNATOR	DIMENSIONS (mm)		WEIGHT (mm)	
	STAND BY (kVA)	PRIME (kVA)			OPEN SET	CANOPY	OPEN SET	CANOPY
GJB17	17	15,3	4 M05G17/5	M18	1500x750x1100	1900x920x1180	600	700
GJB22	22	20	4 M06G22/5	M25	1500x750x1100	1900x920x1180	650	770
GJB33	33	30	4 M06G33/5	M33	1800x950x1450	2250x950x1640	792	1120
GJB44	44	40	4 M06G44/5	M45	1800x950x1450	2250x950x1641	810	1135
GJB50	50	45	4 M06G50/5	M50	1800x950x1450	2250x950x1641	840	1170
GJB55	55	50	4 M06G55/5	M55	1800x950x1450	2440x1000x1840	860	1200
GJB72	72	65	4 M11G70/5	M75	1800x950x1450	2440x1000x1840	950	1250
GJB88	88	80	4 M11G90/5	M88	2000x950x1500	2750x1100x1840	1010	1360
GJB110	110	100	4 M11G110/5	M110	2000x950x1500	2980x1100x2000	1220	1570
GJB150	150	135	6 M11G150/5	M150	2000x950x1500	2980x1100x2000	1500	1900
GJB165	165	150	6 M11G165/5	M165	2200x950x1500	3200x1100x2100	1600	2000
GJB220	220	200	6 M16G220/5	M220	2500x1100x1600	3500x1100x2200	1760	2160
GJB250	250	230	6 M16G250/5	M250	2500x1100x1600	3500x1250x2240	1950	2350
GJB275	275	250	6 M16G275/5	M275	3000x1100x1800	3500x1250x2240	2660	3050
GJB330	330	300	6 M16G330/5	M330	3000x1250x1800	3950x1400x2400	3004	4404
GJB385	385	346,5	6 M21G385/5	M400	3100x1500x1900	5200x1900x2400	3240	4640
GJB440	440	396	6 M21G440/5	M450	3100x1500x1900	5200x1900x2400	3526	4426
GJB500	500	455	6 M21G500/5	M500	3100x1500x1900	5200x1900x2400	3886	4786
GJB550	550	500	6 M24G550/5	M550	3600x2100x2250	5200x1900x2400	4070	5094
GJB660	660	600	6 M33G660/5	M660	3600x2100x2250	5200x1900x2610	4200	5250
GJB715	715	645	6 M33G715/5	M750	3600x2100x2250	5200x1900x2610	5072	7452
GJB825	825	750	6 M33G825/5	M850	4600x2200x2350	5400x2100x2630	6604	8414
GJB900	900	800	12 M24G900/5	M950	4600x2200x2350	5400x2100x2630	7264	9014
GJB1000	1000	900	12 M24G1000/5	M1000	4600x2200x2350	6300x2200x2800	7264	11053
GJB1100	1100	1000	12 M26G1100/5	M1100	4650x2200x2350	6300x2200x2800	9608	11358
GJB1250	1250	1125	12 M33G1250/5	M1250	4650x2200x2350	8000x2400x2930	9708	11500
GJB1400	1400	1260	12 M33G1400/5	M1500	5500x2350x2700	8000x2400x2930	9802	15500
GJB1700	1700	1530	16M33G1700/5	M1670	5500x2350x2700	8000x2400x2930	9922	16120
GJB1900	1900	1710	16M33G1900/5	M2000	6500x2430x2700	8000x2400x2930	12145	20409

MODEL	400V / 230V		ENGINE	ALTERNATOR	DIMENSIONS (mm)		WEIGHT (mm)	
	STAND BY (kVA)	PRIME (kVA)			OPEN SET	CANOPY	OPEN SET	CANOPY
GJW250X	250	225	TAD830GE	M250	2500x1100x1600	3500x1250x2240	2113	3100
GJW300X	300	270	TAD831GE	M330	3000x1250x1800	3500x1250x2240	2900	4000
GJW350X	350	315	TAD1332GE	M350	3000x1350x1800	4480x1600x2700	3000	4404
GJW440X	440	400	TAD1333GE	M450	3000x1350x1900	4480x1600x2700	3520	4404
GJW520X	520	470	TAD1534GE	M550	3000x1500x2000	4480x1600x2700	4070	4430
GJW550X	550	500	TAD1534GE	M550	3000x1500x2000	4480x1600x2700	4800	5100
GJW580X	580	525	TAD2636GE	M590	3600x2100x2250	5000x1800x2700	5070	7450
GJW630X	630	570	TAD2637GE	M660	3600x2100x2250	5000x2100x2540	6600	8400
GJW700X	700	630	TAD2638GE	M700	3600x2100x2250	5000x2100x2540	6600	8400
GJW750X	750	675	TAD2839GE	M750	3800x2100x2350	5000x2100x2540	7260	9020
GJW900X	900	810	TAD2840GE	M950	4000x2100x2350	5400x2100x2630	9300	11050
GJW1000X	1000	900	TAD2841GE	M1000	4000x2100x2350	5800x2100x2780	9600	11360
GJW1100X	1100	1000	TAD3342GE	M1000	4000x2100x2350	5800x2100x2780	9600	11360
GJW1250X	1250	1125	TAD3343GE	M1250	5500x2100x2700	8000x2250x2610	9720	12550
GJW1385X	1385	1250	TAD3344GE	M1350	5500x2100x2700	8000x2250x2610	9850	15220

MODEL	400V / 230V		ENGINE	ALTERNATOR	DIMENSIONS (mm)		WEIGHT (mm)	
	STAND BY (kVA)	PRIME (kVA)			OPEN SET	CANOPY	OPEN SET	CANOPY
GJV94	94	85	TAD530GE	M96	1900x950x1500	2750x980x1650	1120	1550
GJV110	110	100	TAD531GE	M110	1900x950x1500	2750x980x1650	1120	2050
GJV145	145	130	TAD532GE EDC4	M150	2200x1100x1700	2750x980x1650	1400	2300
GJV165	165	150	TAD731GE	M165	2200x1100x1700	2980x1100x1860	1400	2430
GJV200	200	180	TAD732GE EDC4	M200	2500x1100x1700	2980x1100x1860	1700	2950
GJV220	220	200	TAD733GE EDC4	M220	2500x1100x1700	3400x1100x1960	1700	3050
GJV275	275	250	TAD734GE	M275	3000x1250x1800	3400x1100x1960	2500	3490
GJV330	330	300	TAD1341GE	M330	3300x1350x1900	3980x1250x2060	3500	3820
GJV385	385	350	TAD1342GE	M400	3300x1350x1900	4480x1350x2400	3500	4120
GJV415	415	375	TAD1343GE	M430	3300x1350x1900	4480x1350x2400	3500	4200
GJV450	450	400	TAD1344GE	M450	3300x1350x1900	4480x1350x2400	3500	4400
GJV500	500	450	TAD1345GE	M500	3300x1350x1900	4480x1350x2400	3500	4700
GJV550	550	500	TAD1641GE	M550	3300x1350x1900	4480x1350x2400	3500	4850
GJV630	630	570	TAD1642GE	M660	3600x2100x2250	5000x2100x2965	4200	7800
GJV700	700	630	TAD1643GE	M700	3600x2100x2250	5000x2100x2965	4200	8200



GJMT SERIES

1000 kVA - 2500 kVA

MODEL	400V / 230V		ENGINE	ALTERNATOR	DIMENSIONS (mm)		WEIGHT (mm)	
	STAND BY (kVA)	PRIME (kVA)			OPEN SET	CANOPY	OPEN SET	CANOPY
GJMT1000	1000	900	S12A2-PTA2	M1000	4600x2200x2350	6300x2200x2800	1500	11040
GJMT1100	1100	1000	S12H-PTA	M1100	4600x2200x2350	6300x2200x2800	1500	11040
GJMT1175	1175	1060	S12H-PTA	M1250	4650x2200x2350	8000x2250x2600	3000	11360
GJMT1430	1430	1290	S12R-PTA	M1500	4650x2200x2700	8000x2250x2700	3000	15220
GJMT1550	1550	1400	S12R-PTA2	M1500	5500x2250x2700	8000x2250x2700	3000	15500
GJMT1650	1650	1500	S12R-PTAA2	M1670	5500x2250x2700	8000x2250x2700	3000	16120
GJMT1915	1915	1720	S16R-PTA	M2000	6500x2350x2700	12000x2350x2700	3000	19300
GJMT2100	2100	1890	S16R-PTA2	M2250	6500x2350x2700	12000x2350x2700	3000	20400
GJMT2250	2250	2000	S16R-PTAA2	M2250	6500x2350x2700	12000x2350x2700	3000	20600
GJMT2500	2500	2250	S16R2-PTAW	M2500	6500x2350x2700	12000x2350x2700	3400	20900

GJT SERIES

33 kVA - 110 kVA

MODEL	400V / 230V		ENGINE	ALTERNATOR	DIMENSIONS (mm)		WEIGHT (mm)	
	STAND BY (kVA)	PRIME (kVA)			OPEN SET	CANOPY	OPEN SET	CANOPY
GJT33	33	30	3DN-29T-048C	M33	1800x950x1400	2250x950x1640	740	960
GJT44	44	40	3DT-29T-055C	M45	1800x950x1400	2250x950x1640	740	960
GJT55	55	50	3DT-31T-075C	M55	1800x950x1400	2440x1000x1840	910	1230
GJT66	66	60	4DT 39 T 085 C	M66	1800x950x1400	2440x1000x1840	910	1230
GJT77	77	70	4DT 39 T 095 C	M75	1800x950x1450	2440x1000x1840	950	1280
GJT88	88	80	4DT 41 T 105 C	M88	2000x950x1500	2750x1100x1840	1000	1360
GJT110	110	100	4DT 41 T 115 C	M110	2000x950x1500	2750x1100x1840	1360	1570

GJK SERIES

8 kVA - 40 kVA

MODEL	400V / 230V		ENGINE	ALTERNATOR	DIMENSIONS (mm)		WEIGHT (mm)	
	STAND BY (kVA)	PRIME (kVA)			OPEN SET	CANOPY	OPEN SET	CANOPY
GJK8	8	7	D905-E2BG	M10	1500x750x1100	1900x920x1180	500	650
GJK11	11	10	D1105-E2BG	M12	1500x750x1100	1900x920x1180	500	650
GJK13	13	12	V1505-E2-BG	M12	1500x750x1100	1900x920x1180	500	650
GJK17	17	15	D1703-E2BG	M18	1500x750x1100	1900x920x1180	500	650
GJK22	22	20	V2003-T-E2BG	M25	1500x750x1100	1900x920x1180	650	770
GJK25	25	22,5	V2003-T-E2BG	M25	1500x750x1100	1900x920x1180	650	770
GJK33	33	30	V3300-E2-BG2	M33	1800x950x1500	2225x950x1640	710	1060
GJK40	40	36	V3300-T-E2-BG2	M40	1800x950x1500	2225x950x1640	710	1060



PORTABLE GENERATOR SETS



GUCB R

GUCB⁴R**GJD SERIES****7 kVA - 15 kVA**

MODEL	STANDBY	PRIME	PHASE	ENGINE MODEL	WEIGHT	DIMENSIONS
	kVA	kVA			kg	mm
GJD7000H	7	6	1	188FAE	110	720x492x655
GJD7000H-3	7	6	3	188FAE	115	720x492x655
GJD 7000S	7	6	1	188FAE	171	930x530x740
GJD 7000S-3	7	6	3	188FAE	176	930x530x740
GJD 8000H	8	7	1	192FAE	115	720x492x655
GJD8000H-3	8	7	3	192FAE	120	720x492x655
GJD 8000S	8	7	1	192FAE	175	930x530x740
GJD 8000S-3	8	7	3	192FAE	180	930x530x740
GJD 10000H	10	9	1	198FAE	130	720x492x655
GJD 10000H-3	10	9	3	198FAE	135	720x492x655
GJD 10000S	10	9	1	198FAE	210	1100x760x860
GJD 10000S-3	10	9	3	198FAE	210	1100x760x860
GJD 16000S	15	13,5	1	292FAE	320	1300x700x955
GJD 16000S-3	15	13,5	3	292FAE	320	1300x700x955

GUCB⁴R**GJB SERIES****1 kVA - 9.5 kVA**

MODEL	RATED POWER	MAX. POWER	PHASE	ENGINE MODEL	WEIGHT	DIMENSIONS
	kVA	kVA			kg	mm
GJB1200	1.2	1	1	CP156F	41	510*390*450
GJB3600	3.0	2.8	1	CP170F	43	620*490*510
GJB3600-E	3.0	2.8	1	CP188F	43	620*490*510
GJB6500-E	5.5	5.0	1	CP192F	93	720*560*585
GJB7500-E	7.0	6.5	1	CP192F	95	720*560*585
GJB9500-E	8.0	7.5	1	SC192FB	98	720*560*585
GJB9500-E3	8.0	7.5	3	SC192FB	98	720*560*585



PERKINS

DIESEL GENERATOR SETS

 **Perkins**

GJP SERIES

10 kVA - **2500** kVA

GJP SERIES

10 kVA - 2500 kVA

		MODEL	GJP10	GJP15	GJP22	GJP33	GJP50	GJP66	GJP72	GJP88	GJP110	
GROUP	POWER	STAND BY	kVA	10	15	22	33	50	66	72	88	110
			kW	8	12	17,6	26,4	40	53	58	40	88
	Cosφ 0,8	PRIME	kVA	9	13	20	30	45	60	65	80	100
			kW	7,2	10	16	24	36	48	52	64	80
RATED OUTPUT		kW	8,6	12	20	24	36	48	52	64	81,4	
BRAND			Perkins	Perkins	Perkins	Perkins	Perkins	Perkins	Perkins	Perkins	Perkins	
MODEL			403A-11G1	403A-15G1	404A-22G1	1103A-33G	1103A-33TG1	1103A-33TG2	1104A-44TG1	1104A-44TG2	1104C-44TAG2	
ENGINE TYPE			4 Stroke - Diesel	4 Stroke - Diesel	4 Stroke - Diesel	4 Stroke - Diesel	4 Stroke - Diesel	4 Stroke - Diesel	4 Stroke - Diesel	4 Stroke - Diesel	4 Stroke - Diesel	
INJECTION TYPE			Indirect Injection	Indirect Injection	Indirect Injection	Indirect Injection	Indirect Injection	Indirect Injection	Indirect Injection	Indirect Injection	Indirect Injection	
ASPIRATION TYPE			Naturally Aspirated	Naturally Aspirated	Naturally Aspirated	Naturally Aspirated	Turbo Charge	Turbo Charge	Turbo Charge	Turbo Charge	Turbo Charge	
NUMBER OF CYLINDER			3 L	3 L	4 L	3 L	3 L	3 L	4 L	4 L	4 L	
BORE and STROKE		mm	77x81	84x90	84x100	105x127	105x127	105x127	105x127	105x127	105x127	
DISPLACEMENT		L	1,131	1,496	2	3,3	3,3	3,3	4,4	4,4	4,41	
COOLING SYSTEM			Water Cooling	Water Cooling	Water Cooling	Water Cooling	Water Cooling	Water Cooling	Water Cooling	Water Cooling	Water Cooling	
HEATING POWER		Watt	1000W	1000W	1000W	1000W	1000W	1000W	1000W	1000W	1000W	
FUEL CONSUMPTION 50% PRP		l/h	1,5	2,04	2,9	4,06	5,7	7,54	8	9,7	11,8	
FUEL CONSUMPTION 75% PRP		l/h	2	2,79	4	5,61	8,2	10,8	11,2	14	17,1	
FUEL CONSUMPTION 100% PRP		l/h	2,6	3,67	5,3	7,2	10,7	14,6	14,8	18,7	22,6	
FUEL CONSUMPTION STANDBY		l/h	2,9	4,08	6,1	8,1	12	15,9	16,5	20,5	24,9	
LUBE OIL COMSUMP. WITH FULL LOAD		% fuel	< 0,15	< 0,15	< 0,15	< 0,15	< 0,15	< 0,15	< 0,15	< 0,15	< 0,15	
TOTAL OIL COMSUMP. INC. TUB. FILT.		L	4,9	6	10,6	8,3	7,9	8,3	8	8	8	
TOTAL COOLANT CAPACITY		L	5,2	6	7	10,2	10,2	10,2	13	13	12,6	
GOVERNOR		type	Mechanic	Mechanic	Mechanic	Mechanic	Mechanic	Mechanic	Mechanic	Mechanic	Electronic	
BATTERY CAPACITY		A	60	60	60	60	75	75	75	90	105	
BRAND			Maranello	Maranello	Maranello	Maranello	Maranello	Maranello	Maranello	Maranello	Maranello	
MODEL			M12	M15	M25	M33	M50	M66	M75	M88	M110	
OUTPUT VOLTAGE		V	230/400	230/400	230/400	230/400	230/400	230/400	230/400	230/400	230/400	
FREQUENCY		Hz	50	50	50	50	50	50	50	50	50	
AUTOMATIC VOLTAGE REGULATION		±%	1	1	1	1	1	1	1	1	1	
LxWxH		mm	1500x750x1100	1500x750x1100	1500x750x1100	1800x950x1500	1800x950x1450	1800x950x1450	1800x950x1450	2000x950x1500	2000x950x1500	
WEIGHT		kg	500	550	650	710	850	890	950	1000	1360	
FUEL TANK		lt	70	70	70	140	140	225	225	300	300	
LxWxH		mm	1900x920x1180	1900x920x1180	1900x920x1180	2225x950x1640	2225x950x1640	2440x950x1620	2440x1080x1840	2750x1100x1840	2750x1100x1840	
WEIGHT		kg	650	665	770	1060	1190	1250	1280	1360	1570	
FUEL TANK		lt	70	70	70	140	140	225	225	300	300	

GJP SERIES

10 kVA - 2500 kVA

		MODEL	GJP150	GJP165	GJP200	GJP220	GJP250	GJP275	GJP300	GJP330	GJP400	
GROUP	POWER	STAND BY	kVA	150	165	200	220	250	275	300	330	400
			kW	120	132	160	176	200	220	240	264	320
	Cosφ 0,8	PRIME	kVA	135	150	180	200	230	250	275	300	350
			kW	108	120	144	160	184	200	220	240	280
RATED OUTPUT			kW	108	120	144	160	185	226	246	270	288
BRAND			Perkins	Perkins	Perkins	Perkins	Perkins	Perkins	Perkins	Perkins	Perkins	
MODEL			1106A-70TG1	1106A-70TAG2	1106A-70TAG3	1106A-70TAG4	1506A-E88TAG2	1506A-E88TAG3	1506A-E88TAG4	1586A-E88TAG5	2206A-E13TAG2	
ENGINE TYPE			4 Stroke - Diesel	4 Stroke - Diesel	4 Stroke - Diesel	4 Stroke - Diesel	4 Stroke - Diesel	4 Stroke - Diesel	4 Stroke - Diesel	4 Stroke - Diesel	4 Stroke - Diesel	
INJECTION TYPE			Direct Injection	Direct Injection	Direct Injection	Direct Injection	Direct Injection	Direct Injection	Direct Injection	Direct Injection	Direct Injection	
ASPIRATION TYPE			Turbo Charged	Turbo Charged ACC	Turbo Charged ACC	Turbo Charged ACC	Turbo Charged ACC	Turbo Charged ACC	Turbo Charged ACC	Turbo Charged ACC	Turbo Charged ACC	
NUMBER OF CYLINDER			6 L	6 L	6 L	6 L	6 L	6 L	6 L	6 L	6 L	
BORE and STROKE		mm	105x135	105x135	105x135	105x135	112x149	112x149	112x149	112x149	130x157	
DISPLACEMENT		l	7,01	7,01	7,01	7,01	8,8	8,8	8,8	8,8	12,5	
ENGINE COOLING SYSTEM			Water Cooling	Water Cooling	Water Cooling	Water Cooling	Water Cooling	Water Cooling	Water Cooling	Water Cooling	Water Cooling	
HEATING POWER		Watt	1000W	1000W	1000W	1000W	1000W	2000W	2000W	2000W	2000W	
FUEL CONSUMPTION 50% PRP		l/h	15,9	16,4	20,2	23,1	23,5	28,9	31,6	33	37	
FUEL CONSUMPTION 75% PRP		l/h	22,7	24,7	32	34,7	35,7	41,6	45,8	48,2	54	
FUEL CONSUMPTION 100% PRP		l/h	30,3	33,4	41,4	45,8	48,6	55,5	60,2	64,9	71	
FUEL CONSUMPTION STANDBY		l/h	33,8	36,1	45,1	49,4	51,5	60,7	66,3	73,1	80	
LUBE OIL COMSUMP. WITH FULL LOAD		(% fuel)	< 0,1	< 0,1	< 0,1	< 0,1	< 0,1	< 0,1	< 0,1	< 0,1	< 0,15	
TOTAL OIL COMSUMP. INC. TUB. FILT.		l	18	18	18	18	41	41	41	41	40	
TOTAL COOLANT CAPACTY		l	21	20,5	20,5	20,5	29,6	29,6	33,2	33,2	51,4	
GOVERNOR		type	Mechanic	Mechanic	Mechanic	Electronic	Electronic	Electronic	Electronic	Electronic	Electronic	
BATTERY CAPACITY		A	105	105	105	105	105	105	2X105	2X105	2X105	
BRAND			Maranello	Maranello		Maranello	Maranello	Maranello	Maranello	Maranello	Maranello	
ALTERNATOR MODEL			M150	M165	M200	M220	M250	M275	M330	M330	M400	
OUTPUT VOLTAGE		V	230/400	230/400	230/400	230/400	230/400	230/400	230/400	230/400	230/400	
FREQUENCY		Hz	50	50	50	50	50	50	50	50	50	
AUTOMATIC VOLTAGE REGULATION		+%	1	1	1	1	1	1	1	1	1	
OPEN SET LxWxH		mm	2200x1100x1600	2200x1100x1600	2500x1100x1600	3500x1100x2200	2500x1100x1600	2500x1100x1600	3000x1250x1800	3000x1250x1800	3000x1250x1800	
WEIGHT		kg	1500	1650	1900	2150	2200	2100	2900	3000	3400	
FUEL TANK		lt	300	330	370	370	550	550	600	600	800	
CANOPY LxWxH		mm	2980x1100x2000	3200x1100x2100	3500x1100x2200	3500x1100x2200	3500x1250x2240	3500x1250x2240	3950x1250x2480	3950x1250x2400	4480x1600x2700	
WEIGHT		kg	1900	1970	2160	2750	3100	3100	400	4400	4400	
FUEL TANK		lt	300	330	370	370	550	550	600	600	800	

GJP SERIES

10 kVA - 2500 kVA

		MODEL	GJP450	GJP500	GJP550	GJP630	GJP660	GJP700	GJP825	GJP900	GJP1000	
GROUP	POWER	STAND BY	kVA	450	500	550	630	660	700	825	900	1000
			kW	360	400	440	504	528	560	660	720	800
	Cosφ 0,8	PRIME	kVA	400	450	500	570	600	650	750	800	900
			kW	320	360	400	456	480	520	600	640	720
RATED OUTPUT		kW	320	364	400	574	574	520	608	641	720	
BRAND			Perkins	Perkins	Perkins	Perkins	Perkins	Perkins	Perkins	Perkins	Perkins	
MODEL			2206A-E13TAG3	2506A-E15TAG1	2506A-E15TAG2	2806A-E18TAG1A	2806A-E18TAG1A	2806A-E18TAG2	4006-23TAG2A	4006-23TAG3A	4008-30TAG1	
ENGINE TYPE			4 Stroke - Diesel	4 Stroke - Diesel	4 Stroke - Diesel	4 Stroke - Diesel	4 Stroke - Diesel	4 Stroke - Diesel	4 Stroke - Diesel	4 Stroke - Diesel	4 Stroke - Diesel	
INJECTION TYPE			Direct Injection	Direct Injection	Direct Injection	Direct Injection	Direct Injection	Direct Injection	Direct Injection	Direct Injection	Direct Injection	
ASPIRATION TYPE			Turbo Charged ACC	Turbo Charged ACC	Turbo Charged ACC	Turbo Charged ACC	Turbo Charged ACC	Turbo Charged ACC	Turbo Charged ACC	Turbo Charged ACC	Turbo Charged ACC	
NUMBER OF CYLINDER			6 L	6 L	6 L	6 L	6 L	6 L	6 L	6 L	8 L	
BORE and STROKE		mm	130x157	137x171	137x171	145x183	145x183	145x183	160x190	160x190	160x190	
DISPLACEMENT		l	12,5	15,2	15,2	18,13	18,13	18,13	22,92	22,92	30,56	
COOLING SYSTEM			Water Cooling	Water Cooling	Water Cooling	Water Cooling	Water Cooling	Water Cooling	Water Cooling	Water Cooling	Water Cooling	
HEATING POWER		Watt	2000W	2000W	2000W		2000W	2000W	2000W	2000W	2X2000W Engine	
FUEL CONSUMPTION 50% PRP		l/h	42	50	53	61	61	66	84	88	95	
FUEL CONSUMPTION 75% PRP		l/h	62	72	76	90	90	97	124	132	140	
FUEL CONSUMPTION 100% PRP		l/h	81	95	100	123	123	132	163	175	187	
FUEL CONSUMPTION STANDBY		l/h	90	104	111	134	134	143	178	203	200	
LUBE OIL COMSUMP. WITH FULL LOAD		(% fuel)	< 0,15	< 0,1	< 0,1	< 0,1	< 0,1	< 0,1	< 0,25	< 0,25	< 0,25	
TOTAL OIL COMSUMP. INC. TUB. FILT.		l	40	62	62	62	62	62	113,4	113,4	153	
TOTAL COOLANT CAPACTY		l	51,4	50	50	61	61	61	120	120	140	
GOVERNOR		type	Electronic	Electronic	Electronic	Electronic	Electronic	Electronic	Electronic	Electronic	Electronic	
BATTERY CAPACITY		A	2X105	2X105	2X105	2X105	2X105	2X200	2X200	2X200	2X200	
BRAND			Maranello	Maranello	Maranello	Maranello	Maranello	Maranello	Maranello	Maranello	Maranello	
MODEL			M450	M500	M550	M660	M660	M700	M850	M950	M1000	
OUTPUT VOLTAGE		V	230/400	230/400	230/400	230/400	230/400	230/400	230/400	230/400	230/400	
FREQUENCY		Hz	50	50	50	50	50	50	50	50	50	
AUTOMATIC VOLTAGE REGULATION		+%	1	1	1	1	1	1	1	1	1	
LxWxH		mm	3000x1250x1800	3000x1250x1800	3600x2100x2250	3600x2100x2250	3600x2100x2250	3800x2100x2350	4600x2200x2350	4600x2200x2350	4600x2200x2350	
WEIGHT		kg	3530	3890	4070	4190	4190	5100	6700	7300	9300	
FUEL TANK		lt	800	800	800	1450	1450	1450	1650	1650	1500	
LxWxH		mm	4480x1600x2700	4480x1600x2700	4480x1600x2700	5000x2100x2550	5000x2100x2550	5000x2100x2550	5800x2100x2550	5800x2100x2550	6300x2200x2800	
WEIGHT		kg	4430	4790	5090	5090	5090	7450	8560	9000	11040	
FUEL TANK		lt	800	800	800	1450	1450	1450	1650	1650	1500	

GJP SERIES

10 kVA - 2500 kVA

		MODEL	GJP1100	GJP1250	GJP1385	GJP1500	GJP1650	GJP1875	GJP2000	GJP2250	GJP2500	
GROUP	POWER	STAND BY	kVA	1100	1250	1385	1500	1650	1875	2000	2250	2500
			kW	880	1000	1108	1200	1320	1500	1600	1800	2000
	Cosφ 0,8	PRIME	kVA	1000	1125	1250	1350	1500	1700	1850	2000	2250
			kW	800	900	1000	1080	1200	1360	1480	1600	1800
	RATED OUTPUT	kW	820	950	1002	1092	1225	1364	1476	1600	1800	
	BRAND		Perkins	Perkins	Perkins	Perkins	Perkins	Perkins	Perkins	Perkins	Perkins	
	MODEL		4008-TAG2A	4008-30TAG3	4012-461WG2A	4012-461WG3A	4012-461TAG2A	4012-461TAG3A	4016-TAG1A	4016-61TRG2	4016-61TRG3	
	ENGINE TYPE		4 Stroke - Diesel	4 Stroke - Diesel	4 Stroke - Diesel	4 Stroke - Diesel	4 Stroke - Diesel	4 Stroke - Diesel	4 Stroke - Diesel	4 Stroke - Diesel	4 Stroke - Diesel	
	INJECTION TYPE		Direct Injection	Direct Injection	Direct Injection	Direct Injection	Direct Injection	Direct Injection	Direct Injection	Direct Injection	Direct Injection	
	ASPIRATION TYPE		Turbo Charged ACC	Turbo Charged ACC	Turbo Charged ACC	Turbo Charged ACC	Turbo Charged ACC	Turbo Charged ACC	Turbo Charged ACC	Turbo Charged ACC	Turbo Charged ACC	
	NUMBER OF CYLINDER		8 L	8 L	12 V	12 V	12 V	12 V	16 V	16 V	16 V	
	BORE and STROKE	mm	160x190	160x190	160x190	160x190	160x190	160x190	160x190	160x190	160x190	
	DISPLACEMENT	l	30,56	30,56	45,84	45,84	45,84	45,84	61,12	61,12	61,12	
	COOLING SYSTEM		Water Cooling	Water Cooling	Water Cooling	Water Cooling	Water Cooling	Water Cooling	Water Cooling	Water Cooling	Water Cooling	
	HECTING POWER	Watt	2X2000W Engine	2X2000W Engine	2X2000W Engine	2X2000W Engine	2X2000W Engine	2X2000W Engine	2X2000W Engine	2X2000W Engine	2X2000W Engine	
	FUEL CONSUMPTION 50% PRP	l/h	111	120	141	149	157	187	185	198	234	
	FUEL CONSUMPTION 75% PRP	l/h	162	188	196	212	234	275	277	301	344	
	FUEL CONSUMPTION 100% PRP	l/h	215	244	258	281	310	370	383	405	470	
	FUEL CONSUMPTION STANDBY	l/h	240	269	287	315	341	405	424	463	529	
	LUBE OIL COMSUMP. WITH FULL LOAD	(% fuel)	< 0,25	< 0,25	< 0,25	< 0,25	< 0,25	< 0,25	< 0,25	< 0,25	< 0,25	
	TOTAL OIL COMSUMP. INC. TUB. FILT.	l	153	153	177	177	177	177	214	213	213	
	TOTAL COOLANT CAPACTY	l	149	140	201	201	210	207	316	300	270	
	GOVERNOR	type	Electronic	Electronic	Electronic	Electronic	Electronic	Electronic	Electronic	Electronic	Electronic	
	BATTERY CAPACITY	A	2X200	2X200	2x200	2X2000	2X200	2X200	2X200	2X200	2X200	
	BRAND		Maranello	Maranello	Maranello	Maranello	Maranello	Maranello	Maranello	Maranello	Maranello	
	MODEL		M1100	M1250	M1350	M1500	M1670	M2000	M2000	M2250	M2500	
	OUTPUT VOLTAGE	V	230/400	230/400	230/400	230/400	230/400	230/400	230/400	230/400	230/400	
	FREQUENCY	Hz	50	50	50	50	50	50	50	50	50	
	AUTOMATIC VOLTAGE REGULATION	+%	0,5	1	1	1	1	1	1	1	1	
	OPEN SET	LxWxH	mm	4600x2200x2350	4650x2200x2350	4650x2200x2700	5500x2250x2700	5500x2250x2700	6500x2350x2700	6500x2350x2700	6500x2350x2700	6500x2350x2700
		WEIGHT	kg	9300	9610	9720	9800	9922	10700	12150	12350	16300
		FUEL TANK	lt	1500	3000	3000	3000	3000	3000	3000	3000	3400
	CANOPY	LxWxH	mm	6300x2200x2800	8000x2250x2600	8000x2250x2700	8000x2250x2700	8000x2250x2700	12000x2350x2700	12000x2350x2700	12000x2350x2700	12000x2350x2700
		WEIGHT	kg	11040	11360	15220	15500	16120	19300	20400	20600	20900
		FUEL TANK	lt	1500	3000	3000	3000	3000	3000	3000	3000	3400



RICARDO

DIESEL GENERATOR SETS



GJR SERIES

20 kVA - **400** kVA

GJR SERIES

20 kVA - 400 kVA

		MODEL	GJR20	GJR25	GJR40	GJR50	GJR55	GJR75	GJR90	GJR110	
GROUP	POWER	STAND BY	kVA	20	25	40	50	55	75	90	110
			kW	16	20	32	40	44	60	72	88
	Cosφ 0,8	PRIME	kVA	18	22,5	36	45	50	68	81	100
			kW	14,4	18	29	36	40	54,4	65	80
		RATED POWER	kW	17	22	30	42	42	56	66	110
		BRAND	RICARDO	RICARDO	RICARDO	RICARDO	RICARDO	RICARDO	RICARDO	RICARDO	
		MODEL	R485	R490	R4100D	R4100ZD	R4105D	R4105ZD	R4105ZLD	R6105AZLD	
		ENGINE TYPE	4 Stroke - Diesel	4 Stroke - Diesel	4 Stroke - Diesel	4 Stroke - Diesel	4 Stroke - Diesel	4 Stroke - Diesel	14 Stroke - Diesel	4 Stroke - Diesel	
		INJECTION TYPE	Indirect Injection	Indirect Injection	Indirect Injection	Indirect Injection	Indirect Injection	Indirect Injection	Indirect Injection	Indirect Injection	
		ASPIRATION TYPE	Naturally Aspirated	Naturally Aspirated	Naturally Aspirated	Naturally Aspirated	Naturally Aspirated	Turbo Charge	Turbo Charge, AC	Turbo Charge, AC	
		NUMBER OF CYLINDER	4 In line	4 In line	4 In line	4 In line	4 In line	4 In line	4 In line	6 In line	
		BORE and STROKE	mm	85x95	90x100	100x115	100x125	105x125	105x130	105x130	
		CYLINDER VOLUME	L	2,27	2,672	3,93	4,33	4,33	4,5	6,75	
		COOLING SYSTEM	Water Cooling	Water Cooling	Water Cooling	Water Cooling	Water Cooling	Water Cooling	Water Cooling	Water Cooling	
		HEATER POWER	18.1	18.1	18.1	18.1	18.1	18.1	18.1	18.1	
		FUEL CONSUMPTION STANDBY	l/h	5,8	7,5	8,69	10,978	11,957	16,302	19,558	22,561
		FUEL CONSUMPTION 100% PRP	l/h	5,2	6,6	7,9	9,98	10,87	14,82	17,78	20,51
		FUEL CONSUMPTION 75% PRP	l/h	3,9	5	5,93	7,41	8,15	11,11	13,34	15,38
		FUEL CONSUMPTION 50% PRP	l/h	2,7	3,6	5,14	6,42	7,06	9,63	11,56	13,33
		LUBE OIL COMSUMP. WITH FULL LOAD		<0,5	<0,5	<0,6	<0,6	<0,6	<0,6	<0,6	<0,6
		TOTAL OIL COMSUMP. INC. TUB. FILT.	L	8,5	9	13	13	10	13	13	18
		TOTAL COOLANT CAPACTY	L	16	20	52	16	16	16	18	25
		GOVERNOR	Type	Mechanic / Electronic	Mechanic / Electronic	Mechanic / Electronic	Mechanic / Electronic	Mechanic / Electronic	Mechanic / Electronic	Mechanic / Electronic	
		BATTERY CAPACITY	A	60	60	60	75	75	75	105	105
		BRAND	Maranello	Maranello	Maranello	Maranello	Maranello	Maranello	Maranello	Maranello	
		MODEL	M20	M25	M40	M50	M55	M75	M90	M110	
		OUTPUT VOLTAGE	V	230/400	230/400	230/400	230/400	230/400	230/400	230/400	
		FREQUENCY	Hz	50	50	50	50	50	50	50	
		AUTOMATIC VOLTAGE REGULATION	±%	1	1	1	1	1	1	1	
		LxWxH	mm	1400x650x1300	1500x750x1100	1800x950x1400	1800x950x1400	1800x950x1400	1800x950x1500	1900x950x1500	2200x1100x1700
		WEIGHT	kg	700	720	740	820	910	950	1120	1400
		FUEL TANK	lit	70	70	140	140	225	225	300	300
		LxWxH	mm	1900x920x1180	1900x920x1180	2250x950x1640	22250x950x1640	2440x1000x1840	2440x1000x1840	2750x1100x1840	2980x1100x2000
		WEIGHT	kg	800	850	960	1050	1230	1290	1390	1715
		FUEL TANK	lit	70	70	140	140	225	225	300	300

		MODEL	GJR125	GJR150	GJR175	GJR220	GJR306	GJR330	GJR400
GROUP	POWER	STAND BY	kVA 125	150	175	220	306	330	400
		kVA 100	120	140	176	244,8	264	320	
	CosQ 0,8	PRIME	kVA 113	135	160	200	275	300	350
		kVA 90,4	108	128	160	220	240	280	
RATED POWER		kVA 110	110	132	175	235	250	317	
BRAND			RICARDO	RICARDO	RICARDO	RICARDO	RICARDO	RICARDO	RICARDO
MODEL			R6105AZLD	R6105AZLD	R6105IZLD	R6113AZLD	R6126ZLD4	R6126ZLD5	R6D12D320A
ENGINE TYPE			4 Stroke - Diesel	4 Stroke - Diesel	4 Stroke - Diesel	4 Stroke - Diesel	4 Stroke - Diesel	4 Stroke - Diesel	4 Stroke - Diesel
INJECTION TYPE			Indirect Injection	Indirect Injection	Indirect Injection	Indirect Injection	Indirect Injection	Indirect Injection	Indirect Injection
ASPIRATION TYPE			Turbo Charge, AC	Turbo Charge, AC	Turbo Charge, AC	Turbo Charge, AC	Turbo Charge, AC	Turbo Charge, AC	Turbo Charge, AC
NUMBER OF CYLINDER			6 In Line	6 In Line	6 In Line	6 In Line	6 In Line	6 Order	6 Order
BORE and STROKE		mm	105x130	105x130	105x130	113x125	105x130	126x130	105x130
CYLINDER VOLUME		L	6,75	6,75	7,01	7,52	7,52	9,7	9,7
COOLING SYSTEM			Water Cooling	Water Cooling	Water Cooling	Water Cooling	Water Cooling	Water Cooling	Water Cooling
HEATER POWER			18:1	18:1	18:1	18:1	18:1	18:1	18:1
FUEL CONSUMPTION STANDBY		l/h	22,561	22,561	33,836	29,26	59,884	64,581	78,584
FUEL CONSUMPTION 100% PRP		l/h	20,51	20,51	30,76	26,6	54,44	58,71	71,44
FUEL CONSUMPTION 75% PRP		l/h	15,38	15,38	23,07	30,76	40,03	44,03	63,22
FUEL CONSUMPTION 50% PRP		l/h	13,33	13,33	20,00	41,02	35,38	38,16	50,58
LUBE OIL COMSUMP. WITH FULL LOAD			<0,6	<0,6	<0,6	<0,6	<0,6	<0,6	<0,6
TOTAL OIL COMSUMP. INC. TUB. FILT.		L	18	18	18	18	19	19	18
TOTAL COOLANT CAPACTY		L	25	25	25	35	50	50	25
GOVERNOR		Type	Mechanic / Electronic	Mechanic / Electronic	Mechanic / Electronic	Electronic	Electronic	Electronic	Electronic
BATTERY CAPACITY		A	105	105	105	105	105	2x105	2x105
BRAND			Maranello	Maranello	Maranello	Maranello	Maranello	Maranello	Maranello
MODEL			M125	M150	M175	M220	M330	M330	M400
OUTPUT VOLTAGE		V	230/400	230/400	230/400	230/400	230/400	230/400	230/400
FREQUENCY		Hz	50	50	50	50	50	50	50
AUTOMATIC VOLTAGE REGULATION		±%	1	1	1	1	1	1	1
OPEN SET		LxWxH	mm 2200x1100x1700	2200x1100x1700	2200x1100x1700	2500x1100x1700	3000x1250x1800	3000x1250x1800	3000x1250x1800
WEIGHT		kg	1400	1450	1500	1700	2500	2600	3050
FUEL TANK		lit	300	300	330	370	600	600	600
CANOPY		LxWxH	mm 2980x1100x2000	2980x1100x2000	3200x1100x2100	3500x1100x2200	3950x1250x2400	3950x1250x2400	3950x1250x2400
WEIGHT		kg	1750	1780	1825	2200	2950	3050	4500
FUEL TANK		lit	300	300	330	370	600	600	600



FPT

DIESEL GENERATOR SETS



GJI SERIES

33 kVA - **660** kVA

GJI SERIES

33 kVA - 660 kVA

		MODEL		GJI33	GJI55	GJI66	GJI82	GJI94	GJI110	GJI132	GJI145
GROUP	POWER	STAND BY	kVA	33	55	66	82	94	110	132	145
			kW	26,4	44	53	65,6	72,5	88	105,6	116
	Cos ϕ 0,8	PRIME	kVA	30	50	60	74	85	100	120	130
			kW	24	40	48	59,2	68	80	96	104
RATED POWER			<i>r.p.m</i>	28,7	45	53,5	66	73,3	87,5	107,2	110
BRAND			<i>kW</i>	FPT IVECO	FPT IVECO	FPT IVECO	FPT IVECO	FPT IVECO	FPT IVECO	FPT IVECO	FPT IVECO
MODEL				S8000 AM1	N45 AM2	N45 SM1A	N45 SM2A	N45 SM3	N45 TM2A	N45 TM3	N67 SM1
ENGINE TYPE				4 Stroke - Diesel	4 Stroke - Diesel	4 Stroke - Diesel	4 Stroke - Diesel	4 Stroke - Diesel	4 Stroke - Diesel	4 Stroke - Diesel	44 Stroke - Diesel
INJECTION TYPE				Indirect Injection	Indirect Injection	Indirect Injection	Indirect Injection	Indirect Injection	Indirect Injection	Indirect Injection	Indirect Injection
ASPIRATION TYPE				Naturally Aspirated	Naturally Aspirated	Turbo Charge	Turbo Charge	Turbo Charge	Turbo Charge, AAC	Turbo Charge, AAC	Turbo Charge
NUMBER OF CYLINDER				3 in line	4 in line	4 in line	4 Vertical in line	4 in line	4 in line	4 in line	6 in line
BORE and STROKE			<i>mm</i>	104x115	104x132	104x132	105x127	104x132	104x132	104x132	104x132
CYLINDER VOLUME			<i>L</i>	2,9	4,5	4,5	4,4	4,5	4,5	4,5	6,7
COOLING SYSTEM				Water Cooling	Water Cooling	Water Cooling	Water Cooling	Water Cooling	Water Cooling	Water Cooling	Water Cooling
FUEL CONSUMPTION 50% PRP			<i>l/h</i>	3,80	6,20	7,00	8,60	9,60	11,00	14,40	15,80
FUEL CONSUMPTION 75% PRP			<i>l/h</i>	5,60	9,80	10,20	12,70	15,40	16,20	21,60	24,10
FUEL CONSUMPTION 100% PRP			<i>l/h</i>	7,10	11,60	13,70	17,10	19,40	22,00	27,60	29,30
FUEL CONSUMPTION STANDBY			<i>l/h</i>	8,10	14,60	15,00	19,00	21,20	24,40	30,40	32,00
LUBE OIL COMSUMP. WITH FULL LOAD			<i>L</i>	8,8	12,8	12,8	12,8	12,8	12,8	12,8	17,2
TOTAL OIL COMSUMP. INC. TUB. FILT.			<i>L</i>	9	18,5	18,5	18,5	18,5	18,5	18,5	40,5
VOLTAGE			<i>V</i>	24V	24V	24V	24V	24V	24V	24V	24V
BATTERY CAPACITY			<i>A</i>	60A	75A	75A	90A	90A	105A	105A	105A
BRAND				Maranello	Maranello	Maranello	Maranello	Maranello	Maranello	Maranello	Maranello
MODEL				M33	M55	M66	M88	M96	M110	M135	M150
OUTPUT VOLTAGE			<i>V</i>	230/400	230/400	230/400	230/400	230/400	230/400	230/400	230/400
FREQUENCY			<i>Hz</i>	50	50	50	50	50	50	50	50
AUTOMATIC VOLTAGE REGULATION			$\pm\%$	1	1	1	1	1	1	1	1
LxWxH			<i>mm</i>	1800x900x1420	1800x900x1500	1800x950x1500	2100x1100x1450	2100x1100x1650	2100x1100x1650	2100x1100x1650	2100x1100x1650
WEIGHT			<i>kg</i>	750	860	900	950	1450	1550	1590	1600
FUEL TANK			<i>lt</i>	140	140	225	300	300	300	300	300
LxWxH			<i>mm</i>	2225x950x1640	2225x940x1640	2440x1000x1840	2750x1100x1840	2750x1100x1840	2980x1100x2000	2980x1100x2000	2980x1100x2000
WEIGHT			<i>kg</i>	1100	1190	1250	1290	2130	2250	2290	2300
FUEL TANK			<i>lt</i>	140	140	225	300	300	300	300	300



GJI SERIES

33 kVA - 660 kVA

		MODEL	GJI185	GJI220	GJI275	GJI330	GJI385	GJI440	GJR132	GJI660	
GROUP	POWER	STAND BY	kW	185	220	275	330	385	440	550	660
			kW	148	176	220	264	308	352	440	528
	Cos ϕ 0,8	PRIME	kVA	165	200	250	300	347	400	500	600
			kW	132	160	200	240	278	320	400	480
	RATED POWER	r.p.m	149,7	176,5	229	275	300	300	415	503	
	BRAND		FPT IVECO	FPT IVECO	FPT IVECO	FPT IVECO	FPT IVECO	FPT IVECO	FPT IVECO	FPT IVECO	
	MODEL		N67 TM4	N67 TM7	C87 TE3	C87 TE4	C13 TE2A	C13 TE3A	CR13 TE7W	C16 TE1W	
	ENGINE TYPE		4 Stroke - Diesel	4 Stroke - Diesel	4 Stroke - Diesel	4 Stroke - Diesel	4 Stroke - Diesel	4 Stroke - Diesel	4 Stroke - Diesel	4 Stroke - Diesel	
	INJECTION TYPE		Indirect Injection	Indirect Injection	Indirect Injection	Indirect Injection	Indirect Injection	Indirect Injection	Indirect Injection	Indirect Injection	
	ASPIRATION TYPE		Turbo Charge, AAC	Turbo Charge, AAC	Turbo Charge, AAC	Turbo Charge, AAC	Turbo Charge, AAC	Turbo Charge, AAC	Turbo Charge, AAC	Turbo Charge, AAC	
	NUMBER OF CYLINDER		6 in line	6 in line	6 in line	6 in line	6 in line	6 in line	6 in line	6 in line	
	BORE and STROKE	mm	104x132	104x132	117x135	117x135	135x150	135x150	135x150	141x170	
	CYLINDER VOLUME	l	6,7	6,7	8,7	8,7	12,9	12,88	12,88	15,9	
	COOLING SYSTEM		Water Cooling	Water Cooling	Water Cooling	Water Cooling	Water Cooling	Water Cooling	Water Cooling	Water Cooling	
	FUEL CONSUMPTION 50% PRP	l/h	18,00	23,10	30,00	33,00	38,80	38,80	51,5	57	
	FUEL CONSUMPTION 75% PRP	l/h	29,40	34,70	45,20	48,20	57,30	57,30	80,2	85	
	FUEL CONSUMPTION 100% PRP	l/h	36,60	45,80	55,30	64,90	70,00	70,00	100,6	115	
	FUEL CONSUMPTION STANDBY	l/h	42,20	49,40	58,20	73,10	77,90	77,90	112,6	132	
	LUBE OIL COMSUMP. WITH FULL LOAD	l	17,2	17,2	28	28	35	35	32	32	
	TOTAL OIL COMSUMP. INC. TUB. FILT.	l	25,5	25,5	43	43	67	67	38,1	52,5	
	VOLTAGE	V	24V	24V	24V	24V	24V	24V	24V	24V	
	BATTERY CAPACITY	A	105A	105A	105A	2X105A	2X105A	2X105A	2X105A	2X105A	
	BRAND		Maranello	Maranello	Maranello	Maranello	Maranello	Maranello	Maranello	Maranello	
	MODEL		M194	M220	M275	M330	M400	M450	M550	M660	
	OUTPUT VOLTAGE	V	230/400	230/400	230/400	230/400	230/400	230/400	230/400	230/400	
	FREQUENCY	HZ	50	50	50	50	50	50	50	50	
	AUTOMATIC VOLTAGE REGULATION	\pm %	1	1	1	1	1	1	1	1	
	OPEN SET	LxWxH	mm	2100x1100x1650	2100x1100x1650	2850x1200x1800	3100x1500x1900	3100x1500x1900	3100x1500x1900	3500x1800x2200	3500x1800x2200
WEIGHT		kg	2100	2140	2140	3000	3240	3530	4070	4190	
FUEL TANK		lt	330	370	550	600	800	800	800	1450	
	CANOPY	LxWxH	mm	3200x1100x2100	3200x1100x2100	3500x1250x2240	3950x1250x2240	4480x1600x2700	4480x1600x2700	4480x1600x2700	5000x2100x3040
WEIGHT		kg	2745	2800	2800	4400	4640	4830	5090	5150	
FUEL TANK		lt	330	370	550	600	800	800	800	1450	



BAUDOUIIN

DIESEL GENERATOR SETS

 **MOTEURS** Baudouin

GJB SERIES

17 kVA - **1900** kVA

GJB SERIES

17 kVA - 1900 kVA

		MODEL	GJB17	GJB22	GJB33	GJB44	GJB50	GJB55	GJB72	GJB88	
GROUP	POWER	STAND BY	kVA	17	22	33	44	50	55	72	88
			kW	13,6	17,6	26,4	35,2	40	44	57,6	70,4
	Cosφ 0,8	PRIME	kVA	15,3	20	30	40	45	50	65	80
			kW	12,24	16	24	32	36	40	52	64
RATED POWER		kW	18	23	30	36	44	48	60	74	
BRAND			Baudouin	Baudouin	Baudouin	Baudouin	Baudouin	Baudouin	Baudouin	Baudouin	
MODEL			4 M06G17/5	4 M06G22/5	4 M06G33/5	4 M06G44/5	4 M06G50/5	4 M06G55/5	4 M11G70/5	4 M11G90/5	
ENGINE TYPE			4 Stroke - Diesel	4 Stroke - Diesel	4 Stroke - Diesel	4 Stroke - Diesel	4 Stroke - Diesel	4 Stroke - Diesel	4 Stroke - Diesel	4 Stroke - Diesel	
INJECTION TYPE			Indirect Injection	Indirect Injection	Indirect Injection	Indirect Injection	Indirect Injection	Indirect Injection	Indirect Injection	Indirect Injection	
ASPIRATION TYPE			Naturally Aspirated	Naturally Aspirated	Turbocharged	Turbocharged	Turbocharged	Turbocharged	Turbocharged	Turbocharged	
NUMBER OF CYLINDER			4 in Line	4 in line	4 in line	4 in line	4 in line	4 in line	4 in line	4 in line	
BORE and STROKE		mm	89x90	89x92	89x92	89x92	89x92	89x92	105x130	105x130	
CYLINDER VOLUME		l	2,1	2,3	2,3	2,3	2,3	2,3	4,5	4,5	
COOLING SYSTEM			Water Cooling	Water Cooling	Water Cooling	Water Cooling	Water Cooling	Water Cooling	Water Cooling	Water Cooling	
HECTING POWER		Watt	1000W	1000W	1000W	1000W	1000W	1000W	1000W	1000W	
FUEL CONSUMPTION 50% PRP		l/h	2,6	3,2	4,1	4,6	5,4	6	7,8	9,4	
FUEL CONSUMPTION 75% PRP		l/h	3,7	4,5	5,4	6,8	7,8	8,9	11	13,7	
FUEL CONSUMPTION 100% PRP		l/h	4,8	6,2	7,6	9,3	10,7	11,9	14,6	18,6	
FUEL CONSUMPTION STANDBY		l/h	5,4	7,4	8,5	10,4	11,8	13,3	16,1	20,7	
LUBE OIL COMSUMP. WITH FULL LOAD		% fuel	< 0,4 %	< 0,4 %	< 0,4 %	< 0,4 %	< 0,4 %	< 0,4 %	< 0,2 %	< 0,2 %	
TOTAL OIL COMSUMP. INC. TUB. FILT.		l	8	11,5	11,5	11,5	11,5	9,2	13	13	
TATAL COOLANT CAPACTY		l	9,8	16	16	16	12,9	12,9	17	17	
GOVERNOR		Type	Mechanic	Electronic	Electronic	Electronic	Electronic	Electronic	Electronic	Electronic	
BATTERY CAPACITY		A	60	60	60	60	60	60	60	60	
BRAND			Maranello	Maranello	Maranello	Maranello	Maranello	Maranello	Maranello	Maranello	
MODEL			M18	M25	M33	M45	M50	M55	M75	M88	
OUTPUT VOLTAGE		V	230/400	230/400	230/400	230/400	230/400	230/400	230/400	230/400	
FREQUENCY		Hz	50	50	50	50	50	50	50	50	
AUTOMATIC VOLTAGE REGULATION		±%	1	1	1	1	1	1	1	1	
LxWxH		mm	1500x750x1100	1500x750x1100	1800x950x1450	1800x950x1450	1800x950x1450	1800x950x1450	1800x950x1450	2000x950x1500	
WEIGHT		kg	600	650	792	810	840	860	950	1010	
FUEL TANK		l	70	70	140	140	140	225	300	300	
LxWxH		mm	1900x920x1180	1900x920x1180	2250x950x1640	2250x950x1641	2250x950x1641	2440x1000x1840	2440x1000x1840	2750x1100x1840	
WEIGHT		kg	700	770	1120	1135	1170	1200	1250	1360	
FUEL TANK		l	70	70	140	140	140	225	300	300	

GJB SERIES

17 kVA - 1900 kVA

		MODEL	GJB110	GJB150	GJB166	GJB220	GJB250	GJB275	GJB330	
GRUP	POWER	STAND BY	kVA	110	150	165	220	250	275	330
			kW	88	120	132	176	200	220	264
	Cos ϕ 0,8	PRIME	kVA	100	135	150	200	230	250	300
			kW	80	108	120	160	184	200	240
	RATED POWER	kW	98	128	138	182	216	240	291	
	BRAND		Baudouin	Baudouin	Baudouin	Baudouin	Baudouin	Baudouin	Baudouin	
	MODEL		4 M11G110/5	6 M11G150/5	6 M11G165/5	6 M16G220/5	6 M16G250/5	6 M16G275/5	6 M16G330/5	
	ENGINE TYPE		4 Stroke - Diesel	4 Stroke - Diesel	4 Stroke - Diesel	4 Stroke - Diesel	4 Stroke - Diesel	4 Stroke - Diesel	4 Stroke - Diesel	
	INJECTION TYPE		Indirect Injection	Indirect Injection	Indirect Injection	Indirect Injection	Indirect Injection	Indirect Injection	Indirect Injection	
	ASPIRATION TYPE		Turbocharged	Turbocharged	Turbocharged	Turbocharged	Turbocharged	Turbocharged	Turbocharged	
	NUMBER OF CYLINDER		4 in line	6 in line	6 in line	6 in line	6 in line	6 in line	6 in line	
	BORE and STROKE	mm	105x130	105x130	105x130	126x130	126x130	126x130	126x130	
	CYLINDER VOLUME	L	4,5	6,75	6,75	9,726	9,726	9,726	9,726	
MOTOR	COOLING SYSTEM		Water Cooling	Water Cooling	Water Cooling	Water Cooling	Water Cooling	Water Cooling	Water Cooling	
	HEATING POWER	Watt	1000W	1000W	1000W	1000W	1000W	2000W	2000W	
	FUEL CONSUMPTION 50% PRP	l/h	11,9	15,9	16,7	21,9	25,9	28,4	35,3	
	FUEL CONSUMPTION 75% PRP	l/h	17,4	23,1	24,5	31,6	38,1	42,2	52,3	
	FUEL CONSUMPTION 100% PRP	l/h	23,3	30,4	32,7	42,1	50,9	56,9	70,5	
	FUEL CONSUMPTION STANDBY	l/h	26	33,4	36,1	46,3	56,7	63,2	78,2	
	LUBE OIL COMSUMP. WITH FULL LOAD	(% fuel)	$\leq 0,2\%$	$\leq 0,2\%$	$\leq 0,2\%$	$\leq 0,2\%$	$\leq 0,2\%$	$\leq 0,2\%$	$\leq 0,2\%$	
	TOTAL OIL COMSUMP. INC. TUB. FILT.	L	13	19	19	30	30	30	30	
	TATAL COOLANT CAPACTY	L	13,3	17	17	44	44	44	50	
	GOVERNOR	Type	Electronic	Electronic	Electronic	Electronic	Electronic	Electronic	Electronic	
	BATTERY CAPACITY	A	105	2X60	2X60	2X105	2X105	2X105	2X105	
	BRAND		Maranello	Maranello	Maranello	Maranello	Maranello	Maranello	Maranello	
	MODEL		M110	M150	M165	M220	M250	M275	M330	
OUTPUT VOLTAGE	V	230/400	230/400	230/400	230/400	230/400	230/400	230/400		
FREQUENCY	Hz	50	50	50	50	50	50	50		
AUTOMATIC VOLTAGE REGULATION	$\pm\%$	1	1	1	1	1	1	1		
KABINSIZ	LxWxH	mm	2000x950x1500	2000x950x1500	2200x950x1500	2500x1100x1600	2500x1100x1600	3000x1100x1800	3000x1250x1800	
	WEIGHT	kg	1220	1500	1600	1760	1950	2660	3004	
	FUEL TANK	lt	300	300	330	370	550	550	690	
KABINLI	LxWxH	mm	2980x1100x2000	2980x1100x2000	3200x1100x2100	3500x1100x2200	3500x1250x2240	3500x1250x2240	3950x1400x2400	
	WEIGHT	kg	1570	1900	2000	2160	2350	3050	4404	
	FUEL TANK	lt	300	300	330	370	550	550	690	

GJB SERIES

17 kVA - 1900 kVA

		MODEL	GJB385	GJB440	GJB500	GJB550	GJB660	GJB715	GJB825	
GROUP	POWER	STAND BY	kVA	385	440	500	550	660	715	825
			kW	308	352	400	440	528	572	660
	Cosφ 0,8	PRIME	kVA	344,5	396	455	500	600	645	750
			kW	277,2	316,8	364	400	480	516	600
		RATED POWER	kW	350	368	406	440	520	575	680
		BRAND	Baudouin	Baudouin	Baudouin	Baudouin	Baudouin	Baudouin	Baudouin	
		MODEL	6 M21G385/5	6 M21G440/5	6 M21G500/5	6 M26G550/5	6 M33G660/5	6 M33G715/5	6 M33G825/5	
		ENGINE TYPE	4 Stroke - Diesel	4 Stroke - Diesel	4 Stroke - Diesel	4 Stroke - Diesel	4 Stroke - Diesel	4 Stroke - Diesel	4 Stroke - Diesel	
		INJECTION TYPE	Indirect Injection	Indirect Injection	Indirect Injection	Indirect Injection	Indirect Injection	Indirect Injection	Indirect Injection	
		ASPIRATION TYPE	Turbocharged	Turbocharged	Turbocharged	Turbocharged	Turbocharged	Turbocharged	Turbocharged	
		NUMBER OF CYLINDER	6 in line	6 in line	6 in line	6 in line	6 in line	6 in line	6 in line	
		BORE and STROKE	mm	127x165	127x165	150x150	150x185	150x185	150x185	
		CYLINDER VOLUME	l	12,54	12,54	15,9	19,6	19,6	19,6	
		COOLING SYSTEM	Water Cooling	Water Cooling	Water Cooling	Water Cooling	Water Cooling	Water Cooling	Water Cooling	
		HEATING POWER	Watt	2000W	2000W	2000W	2000W	2000W	2000W	
		FUEL CONSUMPTION 50% PRP	l/h	40,9	43,1	52	53,6	61,7	66,4	72,5
		FUEL CONSUMPTION 75% PRP	l/h	60,6	63,5	77,8	78,4	91,4	99,3	112,2
		FUEL CONSUMPTION 100% PRP	l/h	82,1	85	104,9	110,2	122,7	135,1	150,1
		FUEL CONSUMPTION STANDBY	l/h	91,1	94,9	112,9	116,9	136,3	153,6	182,4
		LUBE OIL COMSUMP. WITH FULL LOAD	(% fuel)	≤ 0.2 %	≤ 0.2 %	≤ 0.2 %	≤ 0.3 %	≤ 0.3 %	≤ 0.3 %	≤ 0.3 %
		TOTAL OIL COMSUMP. INC. TUB. FILT.	l	32	32	32	55	64	64	64
		TATAL COOLANT CAPACTY	l	55	55	55	108,7	129	129	159
		GOVERNOR	type	Electronic	Electronic	Electronic	Electronic	Electronic	Electronic	
		BATTERY CAPACITY	A	2X105	2X105	2X105	2X105	2X200	2X200	2X200
		BRAND	Maranello	Maranello	Maranello	Maranello	Maranello	Maranello	Maranello	
		MODEL	M400	M450	M500	M550	M660	M750	M850	
		OUTPUT VOLTAGE	V	230/400	230/400	230/400	230/400	230/400	230/400	
		FREQUENCY	Hz	50	50	50	50	50	50	
		AUTOMATIC VOLTAGE REGULATION	±%	1	1	1	1	1	1	
		LxWxH	mm	3100x1500x1900	3100x1500x1900	3100x1500x1900	3600x2100x2250	3600x2100x2250	4600x2200x2350	
		WEIGHT	kg	3240	3526	3886	4070	4200	5072	6604
		FUEL TANK	l	800	800	800	800	1450	1450	1650
		LxWxH	mm	5200x1900x2400	5200x1900x2400	5200x1900x2400	5200x1900x2400	5200x1900x2610	5200x1900x2610	5400x2100x2630
		WEIGHT	kg	4640	4426	4786	5094	5250	7452	8414
		FUEL TANK	l	800	800	800	800	1450	1450	1650

GJB SERIES

17 kVA - 1900 kVA

		MODEL	GJB900	GJB1000	GJB1100	GJB1250	GJB1400	GJB1700	GJB1900		
GROUP	POWER	STAND BY	kVA	900	1000	1100	1250	1400	1700	1900	
			kW	720	800	880	1000	1120	1360	1520	
	Cosφ 0,8	PRIME		kVA	800	900	1000	1125	1260	1530	1710
				kW	640	720	800	900	1008	1224	1368
			kW	720	820	880	1007	1100	1390	1530	
BRAND			Baudouin	Baudouin	Baudouin	Baudouin	Baudouin	Baudouin	Baudouin		
MODEL			12 M26G900/5	12 M26G1000/5	12 M26G1100/5	12 M33G1250/5	12 M33G1400/5	16M33G1700/5	16M33G1900/5		
ENGINE TYPE			4 Stroke - Diesel	4 Stroke - Diesel	4 Stroke - Diesel	4 Stroke - Diesel	4 Stroke - Diesel	4 Stroke - Diesel	4 Stroke - Diesel		
INJECTION TYPE			Indirect Injection	Indirect Injection	Indirect Injection	Indirect Injection	Indirect Injection	Indirect Injection	Indirect Injection		
ASPIRATION TYPE			Turbocharged	Turbocharged	Turbocharged	Turbocharged	Turbocharged	Turbocharged	Turbocharged		
NUMBER OF CYLINDER			12 At Vee	12 At Vee	12 At Vee	12 At Vee	12 At Vee	16 At Vee	16 At Vee		
BORE and STROKE		mm	150×150	150×150	150×150	150×185	150×185	150×185	150×185		
CYLINDER VOLUME		l	31,8	31,8	31,8	39,2	39,2	52,3	52,3		
COOLING SYSTEM			Water Cooling	Water Cooling	Water Cooling	Water Cooling	Water Cooling	Water Cooling	Water Cooling		
HEATING POWER		Watt	2000W	2X2000W Engine	2X2000W Engine	2X2000W Engine	2X2000W Engine	2X2000W Engine	2X2000W Engine		
FUEL CONSUMPTION 50% PRP		l/h	91	102	105,7	100,3	108,9	N/A	TBA		
FUEL CONSUMPTION 75% PRP		l/h	130,4	147,3	154	147	160,3	N/A	TBA		
FUEL CONSUMPTION 100% PRP		l/h	172,5	196,8	205,2	198,4	217,6	N/A	TBA		
FUEL CONSUMPTION STANDBY		l/h	190,5	219,3	227,4	220,5	242,9	362,1	396,5		
LUBE OIL COMSUMP. WITH FULL LOAD		% fuel	≤ 0,3 %	≤ 0,3 %	≤ 0,3 %	≤ 0,3 %	≤ 0,3 %	≤ 0,3 %	≤ 0,3 %		
TOTAL OIL COMSUMP. INC. TUB. FILT.		l	113	114	114	160	160	175	175		
TATAL COOLANT CAPACTY		l	148	148	148	188	188	400	400		
GOVERNOR		type	Electronic	Electronic	Electronic	Electronic	Electronic	Electronic	Electronic		
BATTERY CAPACITY		A	2X200	2X200	2X200	2X200	4X200	4X200	4X200		
BRAND			Maranello	Maranello	Maranello	Maranello	Maranello	Maranello	Maranello		
MODEL			M950	M1000	M1100	M1250	M1500	M1670	M2000		
OUTPUT VOLTAGE		V	230/400	230/400	230/400	230/400	230/400	230/400	230/400		
FREQUENCY		Hz	50	50	50	50	50	50	50		
AUTOMATIC VOLTAGE REGULATION		+%	1	1	1	1	1	1	1		
OPEN SET		mm	4600x2200x2350	4600x2200x2350	4650x2200x2350	4650x2200x2350	5500x2350x2700	5500x2350x2700	6500x2430x2700		
WEIGHT		kg	7264	7264	9608	9708	9802	9922	12145		
FUEL TANK		lt	1650	1650	1650	3000	3000	3000	3000		
CANOPY		mm	5400x2180x2630	6300x2200x2800	6300x2200x2800	8000x2400x2930	8000x2400x2930	8000x2400x2930	8000x2400x2930		
WEIGHT		kg	9014	11053	11358	11500	15500	16120	20409		
FUEL TANK		lt	1650	1650	1650	3000	3000	3000	3000		



XENIC

DIESEL GENERATOR SETS



GJW-X SERIES

250 kVA - **1250** kVA

GJW-X SERIES

250 kVA - 1385 kVA

		MODEL	GJW250X	GJW300X	GJW350X	GJW440X	GJW520X	GJW550X	GJW580X	GJW630X	
GROUP	POWER	STAND BY	kVA	250	300	350	440	520	550	580	630
			kW	200	240	280	352	416	440	464	504
	Cosφ 0,8	PRIME	kVA	225	270	315	400	470	500	525	570
			kW	180	216	252	320	376	400	420	456
RATED POWER		kW	206	239	281	336	450	450	465	500	
BRAND			TAD830GE	TAD831GE	TAD1332GE	TAD1333GE	TAD1534GE	TAD1534GE	TAD2636GE	TAD2637GE	
MODEL			XENIC	XENIC	XENIC	XENIC	XENIC	XENIC	XENIC	XENIC	
ENGINE TYPE			4 Stroke - Diesel	4 Stroke - Diesel	4 Stroke - Diesel	4 Stroke - Diesel	4 Stroke - Diesel	4 Stroke - Diesel	4 Stroke - Diesel	4 Stroke - Diesel	
INJECTION TYPE			Indirect Injection	Indirect Injection	Indirect Injection	Indirect Injection	Indirect Injection	Indirect Injection	Indirect Injection	Indirect Injection	
ASPIRATION TYPE			Turbo Charge / AAC	Turbo Charge / AAC	Turbo Charge / AAC	Turbo Charge / AAC	Turbo Charge / AAC	Turbo Charge / AAC	Turbo Charge / AAC	Turbo Charge / AAC	
NUMBER OF CYLINDER			6 - V Type	6 - V Type	6 - V type	6 - V type	6 - V type	6 - V type	12 - V type	12 - V type	
BORE and STROKE		mm	114x135	114x144	135x150	135x150	135x165	135x165	135x150	135x150	
CYLINDER VOLUME		L	8,27	8,82	12,88	12,88	12,88	12,88	24,9	24,9	
COOLING SYSTEM			Water Cooling	Water Cooling	Water Cooling	Water Cooling	Water Cooling	Water Cooling	Water Cooling	Water Cooling	
CRANKSHAFT ROTATION DIRECTION			Anti - Clockwise	Anti - Clockwise	Anti - Clockwise	Anti - Clockwise	Anti - Clockwise	Anti - Clockwise	Anti - Clockwise	Anti - Clockwise	
FUEL CONSUMPTION 50% PRP		l/h	26,7	32,0	37,3	45,6	51,6	59,3	62,2	70,8	
FUEL CONSUMPTION 75% PRP		l/h	35,6	42,7	49,8	60,9	68,8	79,0	83,0	89,7	
FUEL CONSUMPTION 100% PRP		l/h	44,5	53,3	62,2	76,1	85,9	98,8	103,7	118,3	
FUEL CONSUMPTION STANDBY		l/h	48,9	58,7	68,5	83,7	94,5	108,7	114,1	127,9	
LUBE OIL COMSUMP. WITH FULL LOAD		(g/kWh)	≤0,3	≤0,3	≤0,4	≤0,4	≤0,4	≤0,4	≤0,6	≤0,6	
TOTAL OIL COMSUMP. INC. TUB. FILT.		L	22	22	35	35	36	38	53	53	
TATAL COOLANT CAPACTY		L	90	92	120	125	125	140	180	180	
GOVERNOR		Type	Electronic Governor	Electronic Governor	Electronic	Electronic	Electronic	Electronic	Electronic	Electronic	
BATTERY CAPACITY		Type	105	105	2x105	2x105	2x105	2x105	2x105	2x105	
BRAND			Maranello	Maranello	Maranello	Maranello	Maranello	Maranello	Maranello	Maranello	
MODEL			M250	M330	M350	M450	M550	M550	M590	M660	
OUTPUT VOLTAGE		V	230/400	230/400	230/400	230/400	230/400	230/400	230/400	230/400	
FREQUENCY		Hz	50	50	50	50	50	50	50	50	
AUTOMATIC VOLTAGE REGULATION		±%	1	1	1	1	1	1	1	1	
LxWxH		mm	2500x1100x1600	3000x1250x1800	3000x1350x1800	3000x1350x1900	3000x1500x2000	3000x1500x2000	3600x2100x2250	3600x2100x2250	
WEIGHT		kg	2113	2900	3000	3520	4070	4800	5070	6600	
FUEL TANK		lt	550	550	800	800	800	800	1020	1450	
LxWxH		mm	3500x1250x2240	3500x1250x2240	4480x1600x2700	4480x1600x2700	4480x1600x2700	4480x1600x2700	5000x1800x2700	5000x1800x2700	
WEIGHT		kg	3100	4000	4404	4404	4430	5100	7450	8400	
FUEL TANK		lt	550	550	800	800	800	800	1020	1450	

GJW-X SERIES

250 kVA - 1385 kVA

		MODEL	GJW700X	GJW750X	GJW900X	GJW1000X	GJW1100X	GJW1250X	GJW1385X	
GROUP	POWER	STAND BY	kVA	700	750	900	1000	1100	1250	1385
			kW	560	600	720	800	880	1000	1108
	Cosφ 0,8	PRIME	kVA	630	675	810	900	1000	1125	1250
			kW	504	540	648	720	800	900	1000
	RATED POWER		kW	555	600	710	850	850	990	1073
	BRAND			TAD2638GE	TAD2839GE	TAD2840GE	TAD2841GE	TAD3342GE	TAD3343GE	TAD3344GE
	MODEL			XENIC	XENIC	XENIC	XENIC	XENIC	XENIC	XENIC
	ENGINE TYPE			4 Stroke - Diesel	4 Stroke - Diesel	4 Stroke - Diesel	4 Stroke - Diesel	4 Stroke - Diesel	4 Stroke - Diesel	4 Stroke - Diesel
	INJECTION TYPE			Indirect Injection	Indirect Injection	Indirect Injection	Indirect Injection	Indirect Injection	Indirect Injection	Indirect Injection
	ASPIRATION TYPE			Turbo Charge / AAC	Turbo Charge / AAC	Turbo Charge / AAC	Turbo Charge / AAC	Turbo Charge / AAC	Turbo Charge / AAC	Turbo Charge / AAC
	NUMBER OF CYLINDER			12 - V type	12 - V type	12 - V type	12 - V type	12 - V type	12 - V type	12 - V type
	BORE and STROKE	mm		135x155	135x155	135x155	138x168	138x168	138x168	138x168
	CYLINDER VOLUME	l		26,62	26,62	26x62	30,15	30,15	30,15	30,15
ENGINE	COOLING SYSTEM			Water Cooling	Water Cooling	Water Cooling	Water Cooling	Water Cooling	Water Cooling	Water Cooling
	CRANKSHAFT ROTATION DIRECTION			Anti - Clockwise	Anti - Clockwise	Anti - Clockwise	Anti - Clockwise	Anti - Clockwise	Anti - Clockwise	Anti - Clockwise
	FUEL CONSUMPTION 50% PRP	l/h		74,7	88,9	96,6	101,9	118,5	146,1	162,3
	FUEL CONSUMPTION 75% PRP	l/h		99,6	118,5	128,8	135,9	158,1	194,7	216,4
	FUEL CONSUMPTION 100% PRP	l/h		124,5	148,2	161,0	169,9	197,6	243,4	278,5
	FUEL CONSUMPTION STANDBY	l/h		136,9	163,0	177,1	186,9	217,3	267,8	297,5
	LUBE OIL COMSUMP. WITH FULL LOAD	lg/kWh		≤0,6	≤0,6	≤0,6	≤0,6	≤0,6	≤0,6	≤0,6
	TOTAL OIL COMSUMP. INC. TUB. FILT.	l		53	55	55	55	61	61	61
	TATAL COOLANT CAPACITY	l		180	190	190	190	190	192	202
	GOVERNOR	Type			Electronic	Electronic	Electronic	Electronic	Electronic	Electronic
BATTERY CAPACITY	Type			2x200	2x200	2x200	2x200	2x200	2x200	
ALTERNATOR	BRAND			Maranello	Maranello	Maranello	Maranello	Maranello	Maranello	Maranello
	MODEL			M700	M750	M950	M1000	M1000	M1250	M1350
	OUTPUT VOLTAGE	V		230/400	230/400	230/400	230/400	230/400	230/400	230/400
	FREQUENCY	Hz		50	50	50	50	50	50	50
AUTOMATIC VOLTAGE REGULATION	±%			1	1	1	1	1	1	
OPEN SET	LxWxH	mm		3600x2100x2250	3800x2100x2350	4000x2100x2350	4000x2100x2350	4000x2100x2350	5500x2100x2700	5500x2100x2700
	WEIGHT	kg		6600	7260	9300	9600	9600	9720	9850
	FUEL TANK	lt		1450	1450	1500	1500	1500	3000	1600
CANOPY	LxWxH	mm		5000x2100x2540	5000x2100x2540	5400x2100x2630	5800x2100x2780	5800x2100x2780	8000x2250x2610	8000x2250x2610
	WEIGHT	kg		8400	9020	11050	11360	11360	12550	15220
	FUEL TANK	lt		1450	1450	1500	1500	1500	3000	1600



VOLVO

DIESEL GENERATOR SETS

**VOLVO
PENTA**

GJV SERIES

94 kVA - **700** kVA

GJV SERIES

94 kVA - 700 kVA

		MODEL	GJV94	GJV110	GJV145	GJV165	GJV200	GJV220	GJV275	GJV330	
GROUP	POWER	STAND BY	kVA	94	110	145	165	200	220	275	330
			kW	75	88	116	132	160	176	220	264
	Cosφ 0,8	PRIME	kVA	85	100	130	150	180	200	250	300
			kW	68	80	104	120	144	160	200	240
RATED POWER		kW	83	98	125	148	179	195	238	297	
BRAND			VOLVO	VOLVO	VOLVO	VOLVO	VOLVO	VOLVO	VOLVO	VOLVO	
MODEL			TAD530GE	TAD531GE	TAD532GE EDC4	TAD731GE	TAD732GE EDC4	TAD733GE EDC4	TAD734GE	TAD1341GE	
ENGINE TYPE		g/kWh	219	218	210	216	213	214	217	195	
INJECTION TYPE			Turbo ACC	Turbo ACC	Turbo ACC	Turbo ACC	Turbo ACC	Turbo ACC	Turbo ACC	Turbo ACC	
ASPIRATION TYPE			4 - Line	4 - Line	4 - Line	6 - Line	6 - Line	6 - Line	6 - Line	6	
BORE and STROKE		mm	108x130	108x130	108x130	108x130	108x130	108x130	108x130	131x158	
DISPLACEMENT		l	4,76	4,76	4,76	7,15	7,15	7,15	7,15	12,78	
COOLING SYSTEM			Water Cooling	Water Cooling	Water Cooling	Water Cooling	Water Cooling	Water Cooling	Water Cooling	Water Cooling	
GOVERNOR			Electronic	Electronic	Electronic	Electronic	Electronic	Electronic	Electronic	Electronic	
FUEL CONSUMPTION 50% PRP		l/h	9,23	10,58	14,12	15,80	18,54	20,41	27,40	30,19	
FUEL CONSUMPTION 75% PRP		l/h	13,13	15,38	19,99	22,86	27,05	30,19	38,27	45,42	
FUEL CONSUMPTION 100% PRP		l/h	17,35	20,50	26,29	30,34	36,07	40,64	47,98	59,50	
FUEL CONSUMPTION STANDBY		l/h	20,65	24,40	31,29	36,10	42,92	48,36	57,10	70,81	
LUBE OIL COMSUMP. WITH FULL LOAD		l	13	13	13	20	20	20	34	36	
TOTAL OIL COMSUMP. INC. TUB. FILT.		l	20	20	20	24	24	24	34	44	
TATAL COOLANT CAPACITY		V	12	12	12	24	24	24	24	24	
BATTERY CAPACITY		A	105A	105A	105A	2X105A	2X105A	2X105A	2X105A	2X105A	
BRAND			Maranello	Maranello	Maranello	Maranello	Maranello	Maranello	Maranello	Maranello	
MODEL			M96	M110	M150	M165	M200	M220	M275	M330	
OUTPUT VOLTAGE		V	230/400	230/400	230/400	230/400	230/400	230/400	230/400	230/400	
FREQUENCY		Hz	50	50	50	50	50	50	50	50	
AUTOMATIC VOLTAGE REGULATION		±%	0,5	0,5	0,5	0,5	0,5	0,5	0,5	0,5	
LxWxH		mm	1900x950x1500	1900x950x1500	2200x1100x1700	2200x1100x1700	2500x1100x1700	2500x1100x1700	3000x1250x1800	3300x1350x1900	
WEIGHT		kg	1120	1120	1400	1400	1700	1700	2500	3500	
FUEL TANK		lt	240	340	340	340	400	400	500	500	
LxWxH		mm	2750x980x1650	2750x980x1650	2750x980x1650	2980x1100x1860	2980x1100x1860	3400x1100x1960	3400x1100x1960	3980x1250x2060	
WEIGHT		kg	1550	2050	2300	2430	2950	3050	3490	3820	
FUEL TANK		lt	240	340	340	340	400	400	500	500	

GJV SERIES

94 kVA - 700 kVA

		MODEL	GJV385	GJV415	GJV450	GJV500	GJV550	GJV630	GJV700		
GROUP	POWER	STAND BY	kVA	385	415	450	500	550	630	700	
			kW	308	332	360	400	440	504	560	
	Cosφ 0,8	PRIME		kVA	350	375	400	450	500	570	630
				kW	280	300	320	360	400	456	504
	RATED POWER		kW	333	356	389	431	473	554	596	
	BRAND		VOLVO	VOLVO	VOLVO	VOLVO	VOLVO	VOLVO	VOLVO		
	MODEL		TAD1342GE	TAD1343GE	TAD1344GE	TAD1345GE	TAD1641GE	TAD1642GE	TAD1643GE		
	ENGINE TYPE	g/kWh	193	193	197	197	196	195	196		
	INJECTION TYPE		Turbo ACC	Turbo ACC	Turbo ACC	Turbo ACC	Turbo ACC	Turbo ACC	Turbo ACC		
	ASPIRATION TYPE		6	6	6	6	6	6	6		
	BORE and STROKE	mm	131x158	131x158	131x158	131x158	144x165	144x165	144x165		
	DISPLACEMENT	L	12,78	12,78	12,78	12,78	16,12	16,12	16,12		
ENGINE	COOLING SYSTEM		Water Cooling	Water Cooling	Water Cooling	Water Cooling	Water Cooling	Water Cooling	Water Cooling		
	GOVERNOR		Electronic	Electronic	Electronic	Electronic	Electronic	Electronic	Electronic		
	FUEL CONSUMPTION 50% PRP	l/h	33,09	35,28	37,63	42,12	46,80	52,28	50,88		
	FUEL CONSUMPTION 75% PRP	l/h	47,66	51,06	55,68	62,55	69,14	78,42	87,12		
	FUEL CONSUMPTION 100% PRP	l/h	62,89	67,73	73,08	82,97	93,60	106,17	117,94		
	FUEL CONSUMPTION STANDBY	l/h	74,84	80,68	86,87	98,73	111,38	126,34	140,35		
	LUBE OIL COMSUMP. WITH FULL LOAD	L	63	36	36	36	48	48	48		
	TOTAL OIL COMSUMP. INC. TUB. FILT.	L	44	44	44	44	60	60	128		
	TATAL COOLANT CAPACITY	V	24	24	24	24	24	24	24		
	BATTERY CAPACITY	A	2X105A	2X105A	2X105A	2X105A	2X105A	2X200A	2X200A		
ALTERNATOR	BRAND		Maranello	Maranello	Maranello	Maranello	Maranello	Maranello	Maranello		
	MODEL		M400	M430	M450	M500	M550	M660	M700		
	OUTPUT VOLTAGE	V	230/400	230/400	230/400	230/400	230/400	230/400	230/400		
	FREQUENCY	HZ	50	50	50	50	50	50	50		
	AUTOMATIC VOLTAGE REGULATION	±%	0,5	0,5	0,5	0,5	0,5	0,5	0,5		
OPEN SET	LxWxH	mm	3300x1350x1900	3300x1350x1900	3300x1350x1900	3300x1350x1900	3300x1350x1900	3600x2100x2250	3600x2100x2250		
	WEIGHT	kg	3500	3500	3500	3500	3500	4200	4200		
	FUEL TANK	lt	800	800	800	800	800	1000	1000		
CANOPY	LxWxH	mm	4480x1350x2400	4480x1350x2400	4480x1350x2400	4480x1350x2400	4480x1350x2400	5000x2100x2965	5000x2100x2965		
	WEIGHT	kg	4120	4200	4400	4700	4850	7800	8200		
	FUEL TANK	lt	800	800	800	800	800	1000	1000		



mitsubishi

DIESEL GENERATOR SETS



GJMT SERIES

1000 kVA - **2500** kVA



GJMT SERIES

1000 kVA - 2500 kVA

		MODEL	GJMT1000	GJMT1100	GJMT1175	GJMT1430	GJMT1550	
GROUP	POWER	STAND BY	kVA	1000	1100	1175	1430	1550
			kW	800	800	940	1144	1240
	Cosφ 0,8	PRIME	kVA	900	1000	1060	1290	1400
			kW	720	800	848	1032	1120
RATED POWER		kW	720	850	850	1050	1150	
BRAND			Mitsubishi	Mitsubishi	Mitsubishi	Mitsubishi	Mitsubishi	
MODEL			S12A2-PTA2	S12H-PTA	S12H-PTA	S12R-PTA	S12R-PTA2	
ENGINE TYPE			4 Stroke - Diesel	4 Stroke - Diesel	4 Stroke - Diesel	4 Stroke - Diesel	4 Stroke - Diesel	
INJECTION TYPE			Bosch P Tipi x 2	Mitsubishi Birim Enjektör x 12	Mitsubishi Birim Enjektör x 12	Mitsubishi PS6 Tipi x2	Mitsubishi PS6 Tipi x2	
ASPIRATION TYPE			Turbo Charge ACC	Turbo Charge ACC	Turbo Charge ACC	Turbo Charge ACC	Turbo Charge ACC	
NUMBER OF CYLINDER			12 V	12 V	12 V	12 V	12 V	
BORE and STROKE		mm	150x160	150x175	150x175	170x180	170x180	
DISPLACEMENT		L	33,93	37,11	37,11	49,03	49,03	
COOLING SYSTEM			Water Cooling	Water Cooling	Water Cooling	Water Cooling	Water Cooling	
HECTING POWER		Watt	2X2000W Engine	2X2000W Engine	2X2000W Engine	2X2000W Engine	2X2000W Engine	
FUEL CONSUMPTION 50% PRP		l/h	95	120	120	141	149	
FUEL CONSUMPTION 75% PRP		l/h	140	188	188	196	212	
FUEL CONSUMPTION 100% PRP		l/h	187	244	244	258	281	
FUEL CONSUMPTION STANDBY		l/h	200	269	269	287	315	
LUBE OIL COMSUMP. WITH FULL LOAD		(% fuel)	< 0,25	< 0,25	< 0,25	< 0,25	< 0,25	
TOTAL OIL COMSUMP. INC. TUB. FILT.		L	120	153	153	180	180	
TATAL COOLANT CAPACTY		L	100	115	115	125	125	
GOVERNOR		Type	Electronic	Electronic	Electronic	Electronic	Electronic	
BATTERY CAPACITY		A	2X200	2X200	2X200	2x200	2X2000	
BRAND			Maranello	Maranello	Maranello	Maranello	Maranello	
MODEL			M1000	M1100	M1250	M1500	M1500	
OUTPUT VOLTAGE		V	230/400	230/400	230/400	230/400	230/400	
FREQUENCY		Hz	50	50	50	50	50	
AUTOMATIC VOLTAGE REGULATION		±%	1	1	1	1	1	
LxWxH		mm	6600x2200x2350	6600x2200x2350	6650x2200x2350	6650x2200x2700	5500x2250x2700	
WEIGHT		kg	9300	9300	9410	9720	9800	
FUEL TANK		lt	1500	1500	3000	3000	3000	
LxWxH		mm	6300x2200x2800	6300x2200x2800	8000x2250x2600	8000x2250x2700	8000x2250x2700	
WEIGHT		kg	11040	11040	11360	15220	15500	
FUEL TANK		lt	1500	1500	3000	3000	3000	



GJMT SERIES

1000 kVA - 2500 kVA

		MODEL	GJMT1650	GJMT1915	GJMT2100	GJMT2250	GJMT2500	
GROUP	POWER	STAND BY	kVA	1650	1915	2100	2250	2500
			kW	1320	1532	1680	1800	2000
	CosQ 0,8	PRIME	kVA	1500	1720	1890	2000	2250
			kW	1200	1376	1512	1600	1800
	RATED POWER	kW	1250	1400	1550	1600	1800	
	BRAND		Mitsubishi	Mitsubishi	Mitsubishi	Mitsubishi	Mitsubishi	
	MODEL		S12R-PTAAZ	S16R-PTA	S16R-PTAAZ	S16R-PTAAZ	S16R2-PTAAW	
	ENGINE TYPE		4 Stroke - Diesel	4 Stroke - Diesel	4 Stroke - Diesel	4 Stroke - Diesel	4 Stroke - Diesel	
	INJECTION TYPE		Mitsubishi PS6 Tipi x2	Mitsubishi PS8 x2	Mitsubishi PS8 x2	Mitsubishi PS8 Tipi x2	Mitsubishi PS8 Tipi x2	
	ASPIRATION TYPE		Turbo Charge ACC	Turbo Charge ACC	Turbo Charge ACC	Turbo Charge ACC	Turbo Charge ACC	
	NUMBER OF CYLINDER		12 V	16 V	16 V	16 V	16 V	
	BORE and STROKE	mm	170x180	170x180	170x180	170x180	170x180	
	DISPLACEMENT	L	49,03	65,37	65,37	65,37	65,37	
ENGINE	COOLING SYSTEM		Water Cooling	Water Cooling	Water Cooling	Water Cooling	Water Cooling	
	HECTING POWER	Watt	2X2000W Engine	2X2000W Engine	2X2000W Engine	2X2000W Engine	2X2000W Engine	
	FUEL CONSUMPTION 50% PRP	l/h	157	187	185	198	234	
	FUEL CONSUMPTION 75% PRP	l/h	234	275	277	301	344	
	FUEL CONSUMPTION 100% PRP	l/h	310	370	383	405	470	
	FUEL CONSUMPTION STANDBY	l/h	341	405	424	443	529	
	LUBE OIL COMSUMP. WITH FULL LOAD	(% fuel)	< 0,25	< 0,25	< 0,25	< 0,25	< 0,25	
	TOTAL OIL COMSUMP. INC. TUB. FILT.	L	180	230	230	230	230	
	TATAL COOLANT CAPACTY	L	125	170	170	170	170	
	GOVERNOR	Type	Electronic	Electronic	Electronic	Electronic	Electronic	
BATTERY CAPACITY	A	2X200	2X200	2X200	2X200	2X200		
ALTERNATOR	BRAND		Maranello	Maranello	Maranello	Maranello	Maranello	
	MODEL		M1670	M2000	M2250	M2250	M2500	
	OUTPUT VOLTAGE	V	230/400	230/400	230/400	230/400	230/400	
	FREQUENCY	Hz	50	50	50	50	50	
	AUTOMATIC VOLTAGE REGULATION	±%	1	1	1	1	1	
OPEN SET	LxWxH	mm	5500x2250x2700	6500x2350x2700	6500x2350x2700	6500x2350x2700	6500x2350x2700	
	WEIGHT	kg	9922	10700	12150	12350	16300	
	FUEL TANK	lt	3000	3000	3000	3000	3400	
CANOPY	LxWxH	mm	8000x2250x2700	12000x2350x2700	12000x2350x2700	12000x2350x2700	12000x2350x2700	
	WEIGHT	kg	16120	19300	20400	20600	20900	
	FUEL TANK	lt	3000	3000	3000	3000	3400	

DEUTZ

DIESEL GENERATOR SETS

DEUTZ

GJD SERIES

50 kVA - 145 kVA



DEUTZ

GJD SERIES

50 kVA - 145 kVA

		MODEL	GJD50	GJD75	GJD100	GJD132	GJD145		
GROUP	POWER	STAND BY	kVA	50	75	110	150	165	
			kW	40	60	88	120	132	
	Cosφ 0,8	PRIME		kVA	45	68	100	135	150
				kW	36	54,4	80	108	120
	RATED POWER		kW	45	66	99	132	145	
	BRAND		DEUTZ	DEUTZ	DEUTZ	DEUTZ	DEUTZ		
	MODEL		226-4D	226T-4D	226T-6D	226TA-6D	226TA-6D5		
	ENGINE TYPE		4 Stroke - Diesel	4 Stroke - Diesel	4 Stroke - Diesel	4 Stroke - Diesel	4 Stroke - Diesel		
	COMPRESSION RATIO		18:1	18:1	18:1	18:1	18:1		
	ASPIRATION		Natural	Turbo Charger	Turbo Charger	Turbocharged and Intercooled	Turbocharged and Intercooled		
	NUMBER OF CYLINDER		4/8	4/8	4/8	6/12	6/12		
	BORE & STROKE	mm	105x120	105x120	105x120	105x120	105x120		
ENGINE		CYLINDER VOLUME	l	4,16	4,16	6,23	6,23	6,23	
		COOLING SYSTEM		Water Cooling	Water Cooling	Water Cooling	Water Cooling	Water Cooling	
		FUEL CONSUMPTION 50% PRP	l/h	4,9	7,2	10,5	13,8	15,1	
		FUEL CONSUMPTION 75% PRP	l/h	6,9	10,3	14,8	19,6	21,4	
		FUEL CONSUMPTION 100% PRP	l/h	8,1	11,9	17,5	22,9	25,3	
		FUEL CONSUMPTION STANDBY	l/h	8,8	12,9	18,8	24,8	27,3	
		LUBE OIL CONSUMP. WITH FULL LOAD	% fuel	10,2	14,7	21,4	28,3	31,1	
		TOTAL OIL CONSUMP. INC. TUB. FILT.	l	9,75	9,75	14	14	14	
		TATAL COOLANT CAPACITY	l	20	20	20	20	20	
		GOVERNOR	type	Electric/Mechanic	Electric/Mechanic	Electric/ Mechanic	Electric/ Mechanic	Electric/ Mechanic	
		BATTERY CAPACITY	A	75	75	90	105	105	
		BRAND		Maranello	Maranello	Maranello	Maranello	Maranello	
		MODEL		M50	M75	M100	M135	M150	
	ALTERNATOR		OUTPUT VOLTAGE	V	230/400	230/400	230/400	230/400	230/400
		FREQUENCY	Hz	50	50	50	50	50	
		AUTOMATIC VOLTAGE REGULATION	±%	1	1	1	1	1	
OPEN SET		LxWxH	mm	1800x950x1400	1800x950x1500	1900x950x1500	2200x1100x1700	2200x1100x1700	
		WEIGHT	kg	820	950	1120	1480	1450	
		FUEL TANK	lt	140	225	300	300	300	
CANOPY		LxWxH	mm	22250x950x1640	2440x1000x1840	2750x1100x1840	2980x1100x2000	2980x1100x2000	
		WEIGHT	kg	1050	1290	1390	1750	1780	
		FUEL TANK	lt	140	225	300	300	300	

TUMOSAN

DIESEL GENERATOR SETS



GJT SERIES

33 kVA - 110 kVA



GJT SERIES

33 kVA - 110 kVA

		MODEL	GJT33	GJT44	GJT55	GJT66	GJT77	GJT88	GJT110	
GROUP	POWER	STAND BY	kVA	33	44	55	66	77	88	110
			kVA	26,4	35,2	44	52,8	61,6	70,4	88
	Cosφ 0,8	PRIME	kVA	30	40	50	60	70	80	100
			kVA	24	32	40	48	56	64	80
ENGINE MODEL			3DN-29T-048C	3DT-29T-055C	3DT-31T-075C	4DT 39 T 085 C	4DT 39 T 095 C	4DT 41 T 105 C	4DT 41 T 115 C	
BRAND			TUMOSAN	TUMOSAN	TUMOSAN	TUMOSAN	TUMOSAN	TUMOSAN	TUMOSAN	
RATED POWER @ 2300 RPM.		B6	48	55	75	85	95	105	115	
RIGHT TORQUE @ 1500 RPM / MIN.		Nm	170	200	255	330	365	350	405	
TOTAL ENGINE VOLUME		cm ³	2908	2908	3100	3908	3908	4100	4100	
BROKE & STROKE		mm/mm	104x115	104x115	106.5x115	104x115	104x115	106.5x115	106.5x115	
CYLINDER VOLUME			3	3	3	4	4	4	4	
MIN. SPECIAL FUEL CONSUMPTION		g/BCh	160	160	Min. Özgül Yakıt Tüketimi	160	160	160	160	
ENGINE	ASPIRATION		Naturally Aspirated	Turbo Charge	Turbo Charge	Turbo Charge	Turbo Charge	Turbo Charge	Turbo Charge	
	NUMBER OF VALVES PER CYLINDER		2	2	2	2	2	2	2	
	COMPRESSION RATIO		17:01	17:01	17:01	17:01	17:01	17:01	17:01	
	DRY WEIGHT		kg	300	300	300	410	410	410	470
AGE WEIGHT		kg	325	325	325	425	425	425	485	
THE CERTIFICATION			Stage IIIA	Stage IIIA	Stage IIIA	Stage IIIA	Stage IIIA	Stage IIIA	Stage IIIA	
COMBUSTION SYSTEM			Direct Injection	Direct Injection	Direct Injection	Direct Injection	Direct Injection	Direct Injection	Direct Injection	
COOLING SYSTEM			Water Cooling	Water Cooling	Water Cooling	Water Cooling	Water Cooling	Water Cooling	Water Cooling	
VOLTAGE		V	24	24	24	24	24	24	24	
BATTERY		A	60	60	60	60	75	75	90	
BRAND			Maranello	Maranello	Maranello	Maranello	Maranello	Maranello	Maranello	
ALTERNATOR	MODEL		M33	M45	M55	M66	M75	M88	M110	
	OUTPUT VOLTAGE		V	230/400	230/400	230/400	230/400	230/400	230/400	230/400
	FREQUENCY		Hz	50	50	50	50	50	50	50
	AUTOMATIC VOLTAGE REGULATION		±%	1	1	1	1	1	1	1
OPEN SET	LxWxH		mm	1800x950x1400	1800x950x1400	1800x950x1400	1800x950x1400	1800x950x1450	2000x950x1500	2000x950x1500
	WEIGHT		kg	740	740	910	910	950	1000	1360
	FUEL TANK		lt	140	140	225	225	225	300	300
CANOPY	LxWxH		mm	2250x950x1640	2250x950x1640	2440x1000x1840	2440x1000x1840	2440x1000x1840	2750x1100x1840	2750x1100x1840
	WEIGHT		kg	960	960	1230	1230	1280	1360	1570
	FUEL TANK		lt	140	140	225	225	225	300	300

KUBOTA

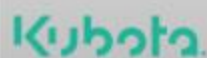
DIESEL GENERATOR SETS



GJK SERIES

8 kVA - 40 kVA





GJK SERIES

8 kVA - 40 kVA

		MODEL	GJK8	GJK11	GJK13	GJK17	GJK22	GJK25	GJK33	GJK40	
GROUP	POWER	STAND BY	kVA	8	11	13	17	22	25	33	40
			kW	6,4	8,8	10,4	13,6	17,6	20	26,4	32
	Cosφ 0,8	PRIME	kVA	7	10	12	15	20	22,5	30	36
			kW	5,6	8	9,6	12	16	18	24	28,8
	RATED POWER		kW	7,4	9,5	11,9	14	20	23	30	38
	BRAND		Kubota	Kubota	Kubota	Kubota	Kubota	Kubota	Kubota	Kubota	
	MODEL		D905-E2BG	D1105-E2BG	V1505-E2-BG	D1703-E2BG	V2003-T-E2BG	V2003-T-E2BG	V3300-E2-BG2	V3300-T-E2-BG2	
	ENGINE TYPE		V-Tip	V-Tip	V-Tip	V Tip	V Tip	V Tip	V tip	V	
	NUMBER OF CYLINDER		3	3	4	4	4	4	4	4	
	BORE & STROKE	mm	72x73,6	78x78,4	78x78,4	87x92,4	83x92,4	83x92,4	98x110	100x120	
	DISPLACEMENT	L	0,898	1,123	1,498	1,647	1,999	1,999	3,318	3,769	
	INJECTION TYPE		E-TVCS	Direct	Indirect Injection	E-TVCS	Indirect Injection	Indirect Injection	Indirect Injection	Indirect Injection	
	ASPIRATION SYSTEM		Natural	Natural	Natural	Naturally Aspirated	Naturally Aspirated	Naturally Aspirated	Naturally Aspirated	Naturally Aspirated	
	COOLING SYSTEM		Water Cooling	Water Cooling	Water Cooling	Water Cooling	Water Cooling	Water Cooling	Water Cooling	Water Cooling	
	FUEL CONSUMPTION STANDBY	l/h	1,96	2,45	3,23	3,51	5,6	5,6	7,15	8,61	
	FUEL CONSUMPTION 100% PRP	l/h	1,44	1,84	2,43	2,64	4,2	4,2	5,37	6,46	
	FUEL CONSUMPTION 75% PRP	l/h	0,98	1,23	1,62	1,76	2,8	2,8	3,58	4,31	
	FUEL CONSUMPTION 50% PRP	l/h	0,49	0,62	0,81	0,88	1,4	1,4	1,79	2,16	
	TOTAL OIL CAPACITY	L	5,1	5,1	6	5,6	7,6	7,6	13,2	13,2	
	COMPRESSION RATIO		23:1	24.0:1	23	22.0:1	21.7	21.7	22.6	22.6	
	GOVERNOR		Mechanic	Mechanic	Mechanic / Electronic	Mechanic	Electronic	Electronic	Mechanic/Electronic	Simultaneous Electronic	
	VOLTAGE	V	12	12	12	12	12	12	12	12	
	BATTERY	A	60	60	60	60	60	60	60	6	
	BRAND		Maranello	Maranello	Maranello	Maranello	Maranello	Maranello	Maranello	Maranello	
	MODEL		M10	M12	M12	M18	M25	M25	M33	M40	
	OUTPUT VOLTAGE	V	230/400	230/400	230/400	230/400	230/400	230/400	230/400	230/400	
	FREQUENCY	Hz	50	50	50	50	50	50	50	50	
	AUTOMATIC VOLTAGE REGULATION	±%	1	1	1	1	1	1	1	1	
	OPEN SET	LxWxH	mm	1500x750x1100	1500x750x1100	1500x750x1100	1500x750x1100	1500x750x1100	1800x950x1500	1800x950x1500	
WEIGHT		kg	500	500	500	500	650	650	710	710	
	FUEL TANK	lit	70	70	70	70	70	70	140	140	
	CANOPY	LxWxH	mm	1900x920x1180	1900x920x1180	1900x920x1180	1900x920x1180	1900x920x1180	2225x950x1640	2225x950x1640	
WEIGHT		kg	650	650	650	650	770	770	1060	1060	
	FUEL TANK	lit	70	70	70	70	70	70	140	140	



PORTABLE

DIESEL GENERATOR SETS

GUCB⚡**R**

GJD SERIES

7 kVA - **15** kVA

GJD SERIES

7 kVA - 15 kVA

MODEL		GJD7000H	GJD7000H-3	GJD7000S	GJD7000S-3	GJD8000H	GJD8000H-3	
GENERATOR SET	FREQUENCY	Hz	50	50	50	50	50	
	VOLTAGE	v	220	230/400	220	230/400	220	230/400
	POWER	kW	7	7	7	7	8	8
	MAXIMUM POWER	kW	6	6	6	6	7	7
	AMPERE	A	31	10	31	10	36	11
	PHASE		1	3	1	3	1	3
	VOLTAGE REGULATION		AVR	AVR	AVR	AVR	AVR	AVR
	POWER FACTOR		1	0,8	1	0,8	1	0,8
	SOUND	dB	75	75	70	70	75	75
ENGINE	ENGINE MODEL		188FAE	188FAE	188FAE	188FAE	192FAE	192FAE
	BORE & STROKE	mm	88X75	88X75	88X75	88X75	92X75	92X75
	MAK. POWER / SPEED	HP/rpm	12HP/3000	12HP/3000	12HP/3000	12HP/3000	13HP/3000	13HP/3000
	STARTUP SYSTEM		Elektric Start	Elektric Start	Elektric Start	Elektric Start	Elektric Start	Elektric Start
	OIL CAPACITY	Litre	1,7	1,7	1,7	1,7	1,7	1,7
	FUEL CAPACITY	Litre	13,5	13,5	15	15	13,5	13,5
FUEL CONSUMPTION	g/kWh	280	280	280	280	242	242	
PACKET	WEIGHT	kg	110	115	171	176	115	120
	DIMENSIONS	mm	720x492x655	720x492x655	930x530x740	930x530x740	720x492x655	720x492x655
	20FT (SET)		76	76	72	72	76	76
40HQ (SET)		152	152	144	144	152	152	



GJD SERIES

7 kVA - 15 kVA

	MODEL	GJD8000S	GJD8000S-3	GJD10000H	GJD10000H-3	GJD10000S	GJD10000S-3	GJD14000S	GJD14000S-3	
GENERATOR SET	FREQUENCY	Hz	50	50	50	50	50	50	50	
	VOLTAGE	v	220	230/400	220	230/400	220	230/400	220	230/400
	POWER	kW	8	8	10	10	10	10	13.5	13.5
	MAXIMUM POWER	kW	7	v	9	9	9	9	15	15
	AMPERE	A	36	11	45	14	45	14	68	21
	PHASE		1	3	1	3	1	3	1	3
	VOLTAGE REGULATION		AVR	AVR	AVR	AVR	AVR	AVR	AVR	AVR
	POWER FACTOR		1	0.8	1	0.8	1	0.8	1	0.8
	SOUND	db	70	70	75	75	70	70	75	75
	ENGINE MODEL		192FAE	192FAE	198FAE	198FAE	198FAE	198FAE	292FAE	292FAE
ENGINE	BORE & STROKE	mm	92x75	92x75	98x82	98x82	98x82	98x82	2-92x75	2-92x75
	MAX. POWER / SPEED	HP/rpm	13HP/3000	13HP/3000	14HP/3000	14HP/3000	14HP/3000	14HP/3000	19.5/3000	19.5/3000
	STARTUP SYSTEM		Elektric Start	Elektric Start	Elektric Start	Elektric Start	Elektric Start	Elektric Start	Elektric Start	Elektric Start
	OIL CAPACITY	Litre	1,7	1,7	2	2	2	2	4	4
	FUEL CAPACITY	Litre	15	15	13,5	13,5	30	30	45	45
	FUEL CONSUMPTION	g/kWh	242	242	230	230	230	230	330	330
	WEIGHT	kg	175	180	130	135	210	210	320	320
PACKET	DIMENSIONS	mm	930x530x740	930x530x740	720x492x655	720x492x655	1100x760x860	1100x760x860	1300x700x955	1300x700x955
	20FT (SET)		72	72	54	54	30	30	24	24
	40HQ (SET)		144	144	108	108	96	96	54	54



PORTABLE

GASOLINE GENERATOR SETS

GUCB⚡**R**

GJB SERIES

1 kVA - 9.5 kVA



GJB SERIES

1 kVA - 9.5 kVA

	MODEL	GJB1200	GJB3600	GJB3600-E	GJB6500-E	GJB7500-E	GJB9500-E	GJB9500-E3	
GENERATOR SET	MOTOR MODEL	CP156F	CP170F	CP188F	CP192F	CP192F	SC192FB	SC192FB	
	MOTOR POWER	HP	3.0	7.5	7.5	13	14	16	16
	DISPLACEMENT	CC	98	223	223	389	439	459	459
	COMPRESSION RATIO		8.5:1	8.5:1	8.5:1	8.5:1	8.5:1	8.5:1	8.5:1
	VOLTAGE / FREQUENCY	V / Hz	220/50	220/50	220/50	220/50	220/50	220/50	380/50
	PHASE		SINGLE PHASE	SINGLE PHASE	SINGLE PHASE	SINGLE PHASE	SINGLE PHASE	SINGLE PHASE	3 PHASE
	STARTUP		CORD	CORD	ELEKTRIC	ELEKTRIC	ELEKTRIC	ELEKTRIC	ELEKTRIC
	RATED POWER	kW	1	2.8	2.8	5.0	6.5	7.5	7.5
	MAX. POWER	kW	1.2	3.0	3.0	5.5	7.0	8.0	8.0
	FULL HEIGHT WORK	m	8	8.5	8.5	8.5	8	8	8
PACKET	WORKING AT 1/2 LOAD	m	12.5	13	13.5	12.5	12.5	12.5	12.5
	FUEL TANK CAPACITY	l	6	15	15	25	25	25	25
	NET WEIGHT	kg	41	43	43	93	95	98	98
	PACKAGE SIZE	mm	510*390*450	620*490*510	620*490*510	720*560*585	720*560*585	720*560*585	720*560*585



Gucbir offers alternative solutions for your Marine Genset Inquiries in "Military and Armed Forces projects" by having a separate qualified team for special projects and also can deliver your demands in shortest delivery periods with one had solutions around the globe.





MARINE

DIESEL GENERATOR MODELS

10 kVA - 1500 kVA



GUCB  **R**

TRAILER

DIESEL GENERATOR MODELS

Our trailers are produced as single-axle, double-axle and four-axle types for heavy and light tonnage capacities and absolutely appropriate to vehicle regulations.



75 kVA 2500 kVA

LIGHTING

TOWERS

The lighting tower provides convenience to its users with its mobile ability to respond quickly to temporary lighting needs. It is a very practical and effective lighting source for sports activities, construction sites, concerts, other activities and night-time installations.

It is ideal and reliable in continuous operation such as concrete casting operations, road and bridge constructions, and night operations.



10 kVA | 55 kVA

GUCB R

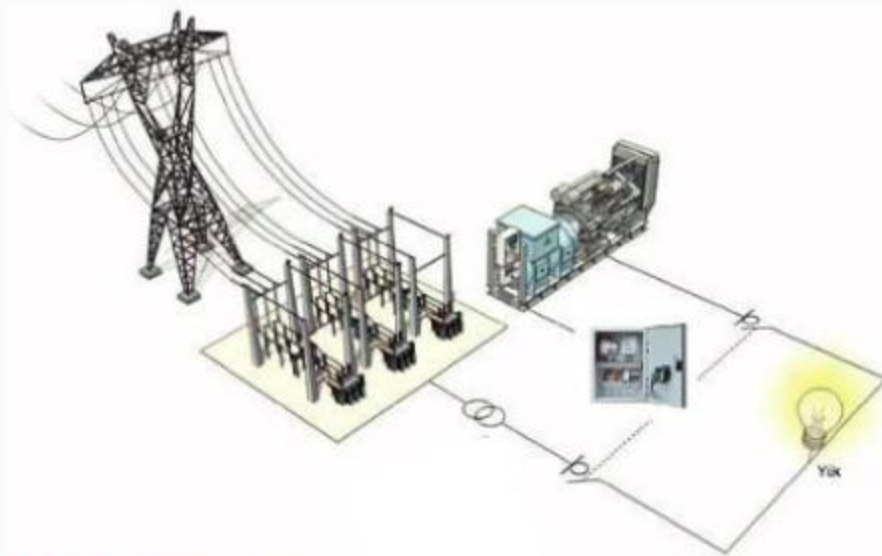
ATS

PANEL

Gucbir designs and manufacturers transfer boards according to standart requirements or according to project based spesific requirements.

Contactors,open or closed type switches or compact ATS switches can be used on Transfer Boards.

In addition to ABB, GE, Schneider, Siemens, Andeli, Hyundai, Gucbir, Telargon, Socomec brands we use in our standarts products, if customer demand is a different brand, transfer board are made with different brand cutters.



SYNCHRON

SYSTEMS

For higher energy requirements the synchronisation of two or more lower capacity generators instead a high power generator provides following advantages;

- Lower cost
- Flexible usage
- Low fuel consumption and cost effectiveness
- Safety usage
- Easy to maintain and service

Field of Application

- Multiple genset synchronisation for higher standby power
- Multiple generator synchronisation for higher prime power
- Generator -network synchronisation for soft transfer
- Synchronised operation with the electricity network
- Synchronisation of genset starting from two genset to 8 genset to more than one network



SPECIAL PROJECTS

Because of special demands for the installation and application of generator sets onsite, customers need customized generator sets or generator systems, special size, tanks capacity, output power, input and output connections and so on. In all the cases GUCBIR amends regular generator sets or designs new sets and power supply systems.

Throughfull customization of power equipment under special user requests is one of the strong point of GUCBIR GENERATOR.



WHY US?

High Quality

Gucbir Generator produces the best quality products in the industry.

Affordable Price

Gucbir Generator works with manufacturers directly, not with intermediaries in the supply of semi-finished products. Guccbir Generator makes machine-weighted production in the factory. It mostly transports with its own vehicles and serves with its own vehicles. In this way, it reduces costs and offers the most affordable prices to customers.

Fast Communication

Gucbir Generator employees can be reached 7x24. You always get quick turns.

Customer Satisfaction Oriented-Work

Gucbir Generator targets happy customers all the time by producing quality products, providing fast service. Guccbir Generator always serves as a perfect orchestra, with the idea that the customer will see the good of goods or services it receives. Guccbir Generator listens to its customers, understands and gets their customers' idea and provides a long-term relationship. Guccbir Generator takes into account customer feedback.

Project-Specific Solutions

Gucbir Generator produces special products for the need with its powerful machine tracks and more than 30 engineering staff. It can produce special solutions even in non-resolutions.

Complete Certification

Gucbir Generator has TSE Quality, CE, Iso 9001, Iso 14001, Iso 25051, Iso 10002, Ohsas, Local Manufacture Certificate, Manufacturing Proficiency Certificate, Capacity Report, Perkins OEM Manufacturer's Certificate, Baudouin OEM Manufacturer's Certificate, Ricardo OEM Manufacturer's Certificate, Maranello OEM Manufacturer's Certificate, Trademark Registration Certificate, Industrial Registration Certificate, After-Sales Service Qualification Certificate, TSE Service Place Qualification Certificate, 1000 Hours Salt Water Test Certificates and UKRSepro, EAC, Gost-R Certificates.

Excellent Design, Performance, Durability

Gucbir Generator makes a difference with different designs from other manufacturers in the industry. This difference ensures increased performance and low volume in products.

Fast Delivery

Gucbir Generator always with around 1000 engine and alternator stocks. So, it delivers the products quickly.

Fast Service

Gucbir Generator provides service all over the world thanks to its powerful service team.

Continuous Innovation

Gucbir Generator constantly improves itself. Guccbir Generator looks at the big picture, open to all kinds of innovation that will benefit the user.

Education

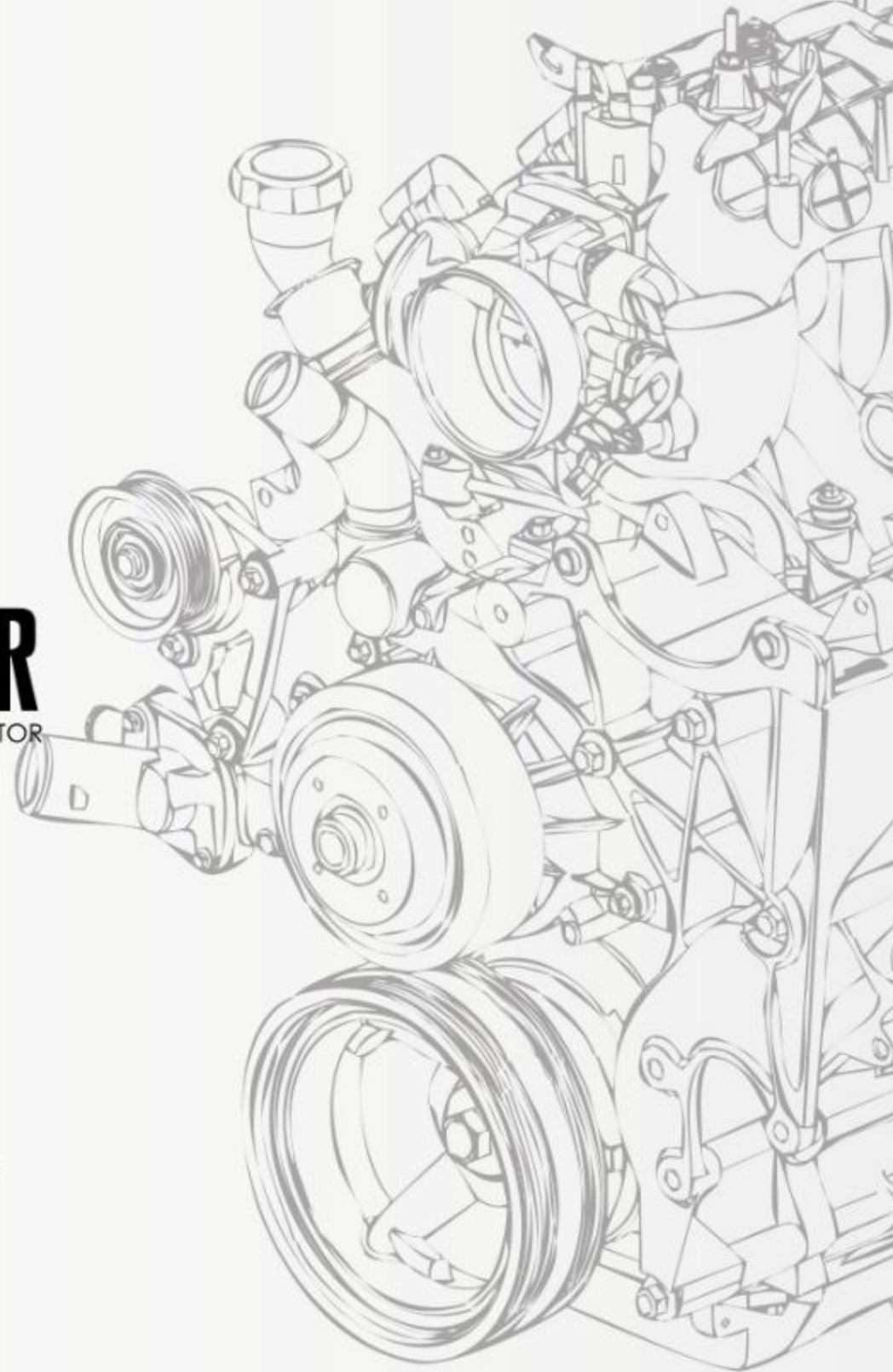
Gucbir Generator keeps employees up to date with continuous training and reflects on its customers.



GUCB R

GUCB R

GENERATOR



FACTORY

Soğanlıyörük Koy, Delihakkı Mah. No:23
KDZ. EREGLI / ZONGULDAK / TURKEY
Tel: +90 372 355 73 74 Fax: +90 372 355 73 74
info@gucbirgenerator.com | www.gucbirgenerator.com

HEAD OFFICE

Serifali Mah. Tavukcuyolu Cad. No:200 / 1
Umraniye / ISTANBUL / TURKEY
Tel: +90 216 312 7979 Fax: +90 216 312 7972
info@gucbirgenerator.com | www.gucbirgenerator.com

DISTRIBUTOR